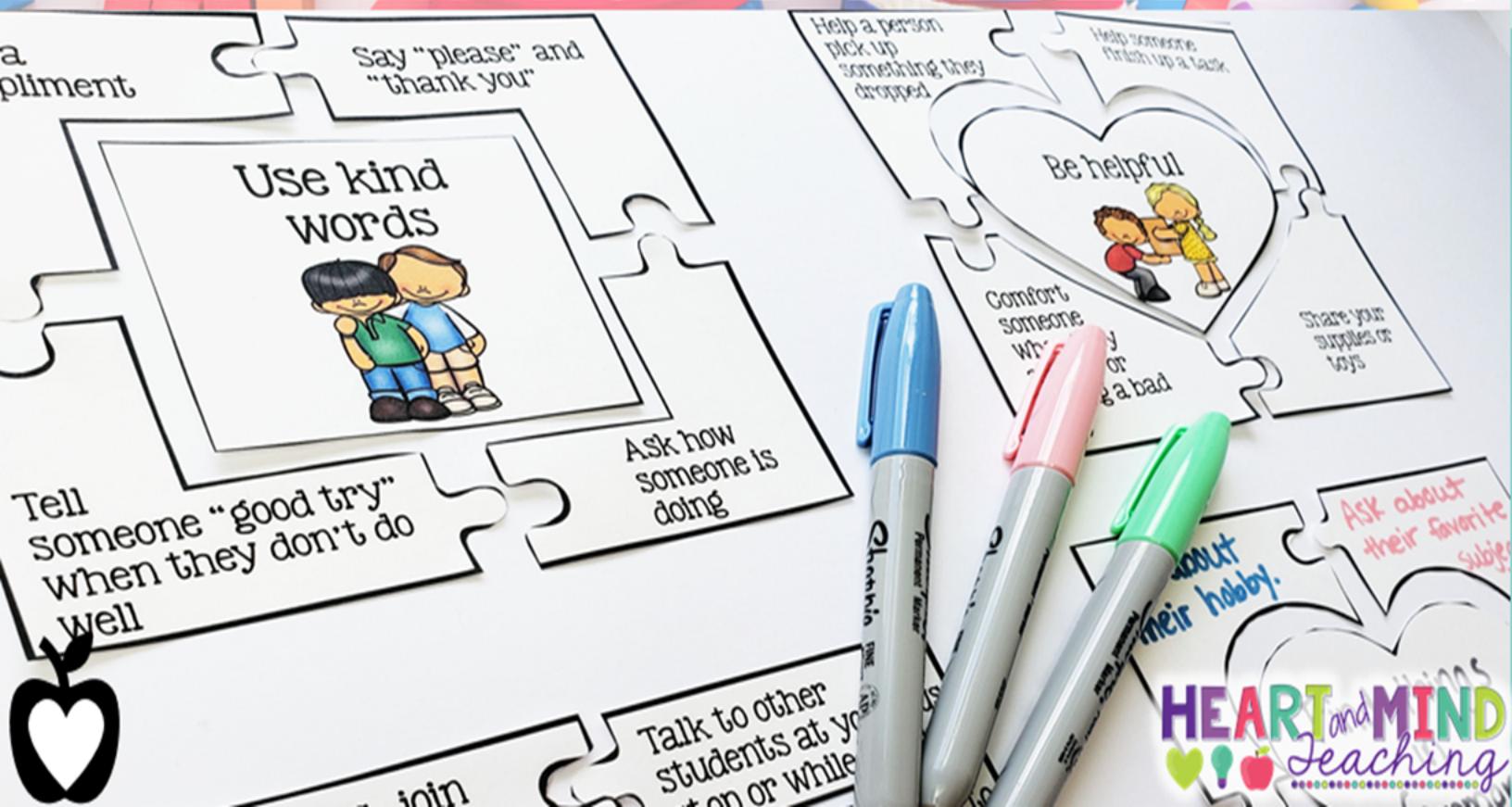


# The puzzle of



# MAKING FRIENDS



# The Puzzle of Making Friends



## Session Objective:

- \*Students will identify ways to make friends and have positive interactions with others.
- \*Students will participate and work together as a group.

## Materials:

- \*Puzzle Pieces (cut out each piece beforehand.)
- \*Pencils

## Guiding Questions:

- \*Why is it important to learn how to make friends?
- \*What do friends add to our lives?
- \*What are some things that people do that might make someone not want to be their friend?

## ASCA Standards Alignment:

- \*Mindset: Belief in development of whole self, including a healthy balance of mental, social/emotional and physical well-being. (M 1)
- \*Behavior: Social Skills: Create positive and supportive relationships with other students. (B-SS 2)
- \*Behavior: Social Skills: Use effective collaboration and cooperation skills. (B-SS 6)

## SEL Competencies:

- \*Self-awareness: recognizing strengths, accurate self-perception.
- \*Relationship skills: relationship building, communication, social engagement.
- \*Social-awareness: Respect for others.

## Activity Details (about 30 min):

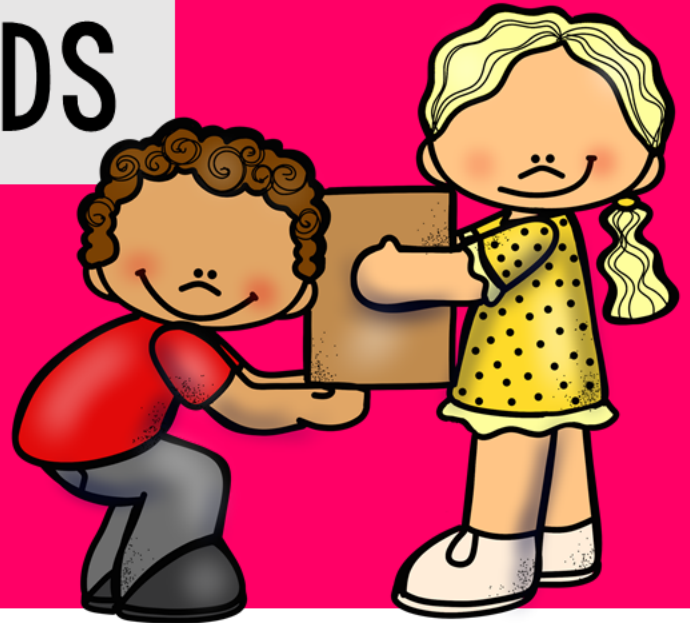
- \*Puzzle of making friends activity: "Today we are going to talk about ways to make friends. I have a bunch of puzzles that I need your help to put back together. Let's start with one at a time, the first is a trait that most people would probably like in a friend, use kind words." Put the square "use kind words" down on the table. Then go through a few puzzle pieces and have them try to find the right example to fit in the puzzle of using kind words. Encourage group collaboration. Go through each puzzle piece one by one. Ask engaging questions throughout the puzzle such as:
- "Are there any puzzle pieces that you would feel comfortable using to make a friend?"
  - "Are there any puzzle pieces that you would feel uncomfortable using to make a friend?"
  - "How would you be helpful in order to make a friend?"
  - "What is another way to be friendly that is not listed?"
  - "What are some other ways to meet and greet new friends?"
  - "What is an example of using kind words that is not listed in the puzzle?"
  - "Can someone give me an example of when they used one of these ways to make a friend?"
- \*Bring out the blank puzzle pieces.
- "Let's think of another way to make a friend and make our own puzzle piece." Have the students provide suggestions of other ways to make a friend (on the main big piece) and examples of how to do that (on the smaller pieces).
- \*Use the guiding questions at the top of this page to help guide your group discussion.

Be  
friendly



# WAYS TO MAKE FRIENDS

Be  
helpful



Use  
kind  
words



Meet  
and  
Greet



Start a  
conversation



Give a compliment

Say "please" and "thank you"

Use kind words



Tell someone "good try" when they don't do well

Ask how someone is doing

Help a person pick up something they dropped

Help someone finish up a task

Be helpful



Comfort someone when they are sad or having a bad day

Share your supplies or toys

Have good eye contact

Smile and make positive responses

Be friendly



Add to the conversation

Listen to what the person is saying

Ask if they like to play video games and which ones

Ask what they like to do on the weekends

Start a conversation



Ask them what movies they like

Ask if they want to join in on the game

At recess, join a group of friends playing.

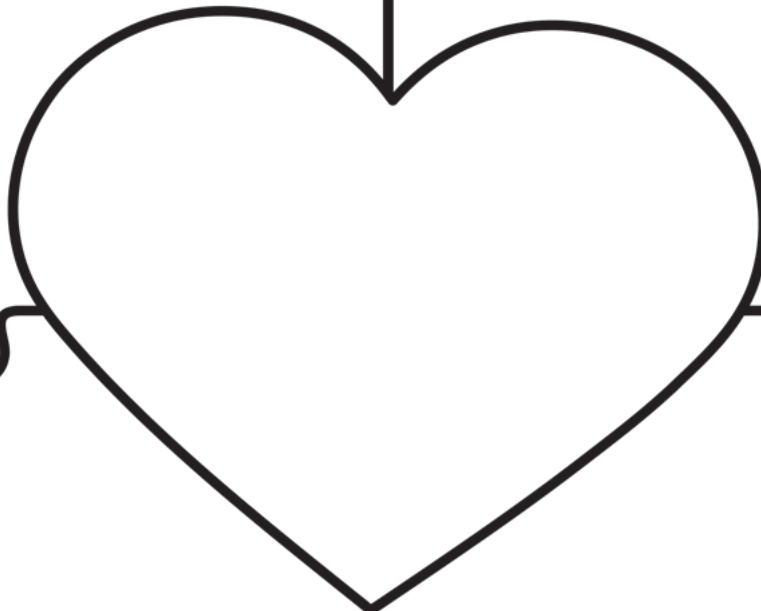
Talk to other students at your bus stop or while waiting for class to start.

## Meet and Greet



Join a club or sport

Sit with someone new at lunch



# The Puzzle of Making Friends



## Session Objective:

- \*Students will identify ways to make friends and have positive interactions with others.
- \*Students will participate and work together as a group.

## Materials:

- \*Puzzle Pieces (cut out each piece beforehand.)
- \*Pencils

## Guiding Questions:

- \*Why is it important to learn how to make friends?
- \*What do friends add to our lives?
- \*What are some things that people do that might make someone not want to be their friend?

## ASCA Standards Alignment:

- \*Mindset: Belief in development of whole self, including a healthy balance of mental, social/emotional and physical well-being. (M 1)
- \*Behavior: Social Skills: Create positive and supportive relationships with other students. (B-SS 2)
- \*Behavior: Social Skills: Use effective collaboration and cooperation skills. (B-SS 6)

## SEL Competencies:

- \*Self-awareness: recognizing strengths, accurate self-perception.
- \*Relationship skills: relationship building, communication, social engagement.
- \*Social-awareness: Respect for others.

## Activity Details (about 30 min):

- \*Puzzle of making friends activity: "Today we are going to talk about ways to make friends. I have a bunch of puzzles that I need your help to put back together. Let's start with one at a time, the first is a trait that most people would probably like in a friend, use kind words." Put the square "use kind words" down on the table. Then go through a few puzzle pieces and have them try to find the right example to fit in the puzzle of using kind words. Encourage group collaboration. Go through each puzzle piece one by one. Ask engaging questions throughout the puzzle such as:
- "Are there any puzzle pieces that you would feel comfortable using to make a friend?"
  - "Are there any puzzle pieces that you would feel uncomfortable using to make a friend?"
  - "How would you be helpful in order to make a friend?"
  - "What is another way to be friendly that is not listed?"
  - "What are some other ways to meet and greet new friends?"
  - "What is an example of using kind words that is not listed in the puzzle?"
  - "Can someone give me an example of when they used one of these ways to make a friend?"
- \*Bring out the blank puzzle pieces.
- "Let's think of another way to make a friend and make our own puzzle piece." Have the students provide suggestions of other ways to make a friend (on the main big piece) and examples of how to do that (on the smaller pieces).
- \*Use the guiding questions at the top of this page to help guide your group discussion.

# WAYS TO MAKE FRIENDS

Be  
friendly



Be  
helpful



Use  
kind  
words



Meet  
and  
Greet



Start a  
conversation



Give a compliment

Say "please" and "thank you"

Use kind words



Tell someone "good try" when they don't do well

Ask how someone is doing

Help a person pick up something they dropped

Help someone finish up a task

Be helpful



Comfort someone when they are sad or having a bad day

Share your supplies or toys

Have good  
eye contact

Smile and  
make  
positive  
responses

Be  
friendly



Add to the  
conversation

Listen to  
what the  
person is  
saying

Ask if they  
like to play  
video games  
and which  
ones

Ask what  
they like to  
do on the  
weekends

Start a  
conversation



Ask them  
what movies  
they like

Ask if they  
want to join  
in on the  
game

At recess, join  
a group of  
friends  
playing.

Talk to other  
students at your bus  
stop or while waiting

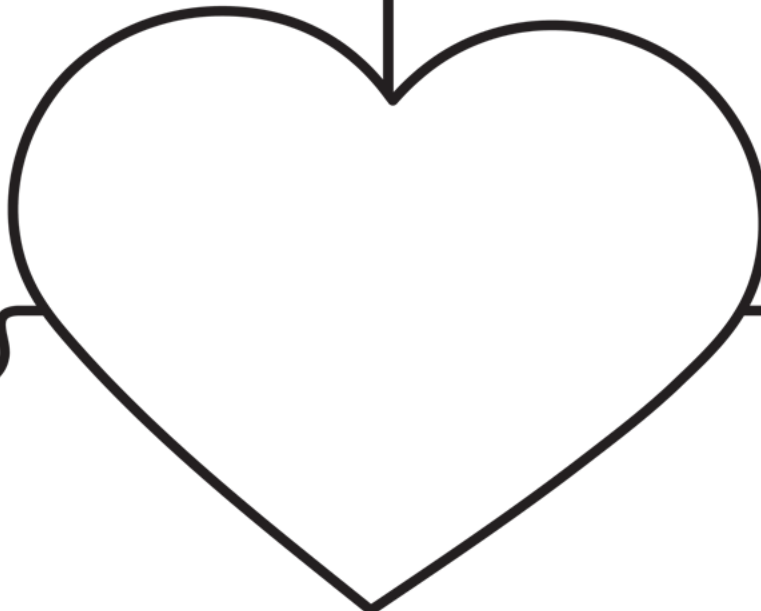
for  
class to  
start.

## Meet and Greet



Join a club or sport

Sit with  
someone new  
at lunch



# GOOGLE CLASSROOM

Your resource comes with a digital version for use in Google Slides via Google Classroom. Follow these steps to upload your resource into your Google Drive.

**1** Click here  [Puzzle of Making Friends](#)

**2** You will be prompted to make a copy of the resource. Click on the blue box that says "Make a copy" and the resource will go directly into your Google drive.

Google Drive

Copy document

Would you like to make a copy of Career Interest Inventory?

Make a copy



**3** Go to your Google Drive and locate the copy of the file. You can rename the file at this point or add/delete slides.

**4** Next, go to your Google Classroom and add an assignment. Select the Google Drive Symbol and select the resource you want to assign.

**5** From here, you should see a grey box that says "Students can view file." Click the grey box. A dropdown menu should appear. Select, "Make a copy for each student."

**YOU HAVE TO MAKE A COPY FOR EACH STUDENT!**

Otherwise they will all be editing the same file.

Click "Assign" in the top right corner if you're ready to post!

Helpful links for using Google Classroom:

[Teacher Tips for using Google Classroom \(TPT blog\)](#)

[Getting Started with Google Classroom \(youtube video\)](#)

# ABOUT THE AUTHOR



## I'M ASHLEY

an Elementary School Counselor.

I have a B.A. in Psychology and an M.A. in School Counseling. I have a passion for creating fun and engaging resources for Counseling and Social Emotional Learning. I am a wife, and mother to 2 young boys. Thank you for supporting my little shop.

Click the icons to connect with me

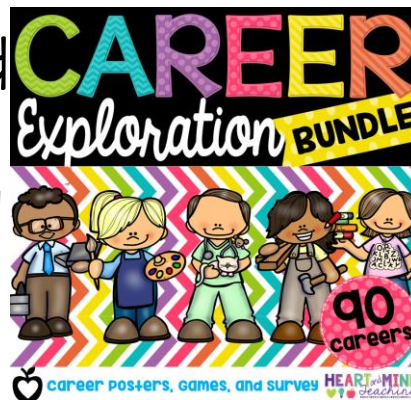


Access my **freebie library** by subscribing to my newsletter, [click here](#)

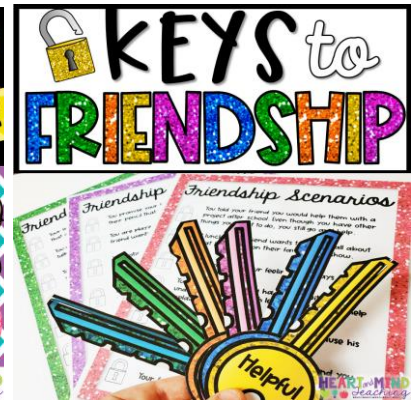
# RECOMMENDED RESOURCES



← This product and 8 others are included in this curriculum



Click on the pictures.



# TERMS OF USE

© Heart and Mind Teaching, 2020. All rights reserved. Purchase of this item entitles the purchaser the right to reproduce for classroom, personal, and google classroom use only. Use in multiple classrooms, requires the purchase of additional licenses. Redistribution or duplication of this product is strictly forbidden without the written permission of the publisher. Copying any part of this product and placing it on a publicly accessible website is strictly forbidden and is a violation of the Digital Millennium Copyright Act (DMCA). You may post this for single-classroom use on a password protected private nonprofit student site such as google classroom. **You may NOT post my products on any public, for-profit, or commercial websites or entities such as Outschool.** Thank you for abiding by universally accepted codes of professional ethics while using this product.

Please feel free to contact me if you have any questions or feedback

[heartandmindteaching@gmail.com](mailto:heartandmindteaching@gmail.com)



# CREDITS

