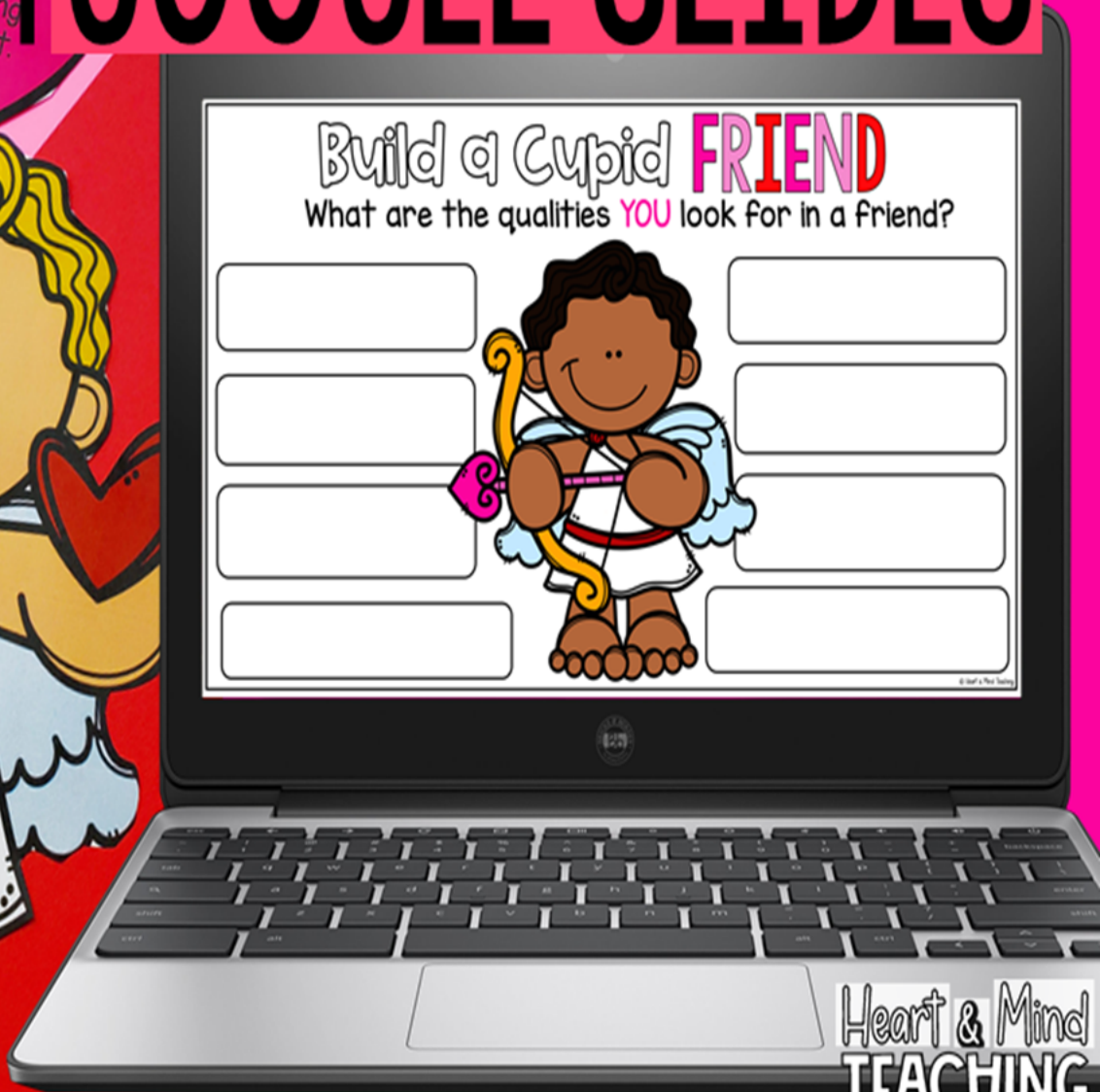


BUILD A CUPID

FRIEND

USE WITH GOOGLE SLIDES™



Build a Cupid FRIEND

Session Objective:

- *Students will be able to identify traits that they value in a friend.
- *Students will participate and work together.
- *Students will self-reflect on their own traits.

Materials:

- *Build a Cupid Friend Activity
- *Pencils, Crayons, Scissors, Glue/Tape

Guiding Questions:

- *What are some traits that are valued in a friend?
- *What traits are not valued in a friend?

Session Details (about 30 minutes)

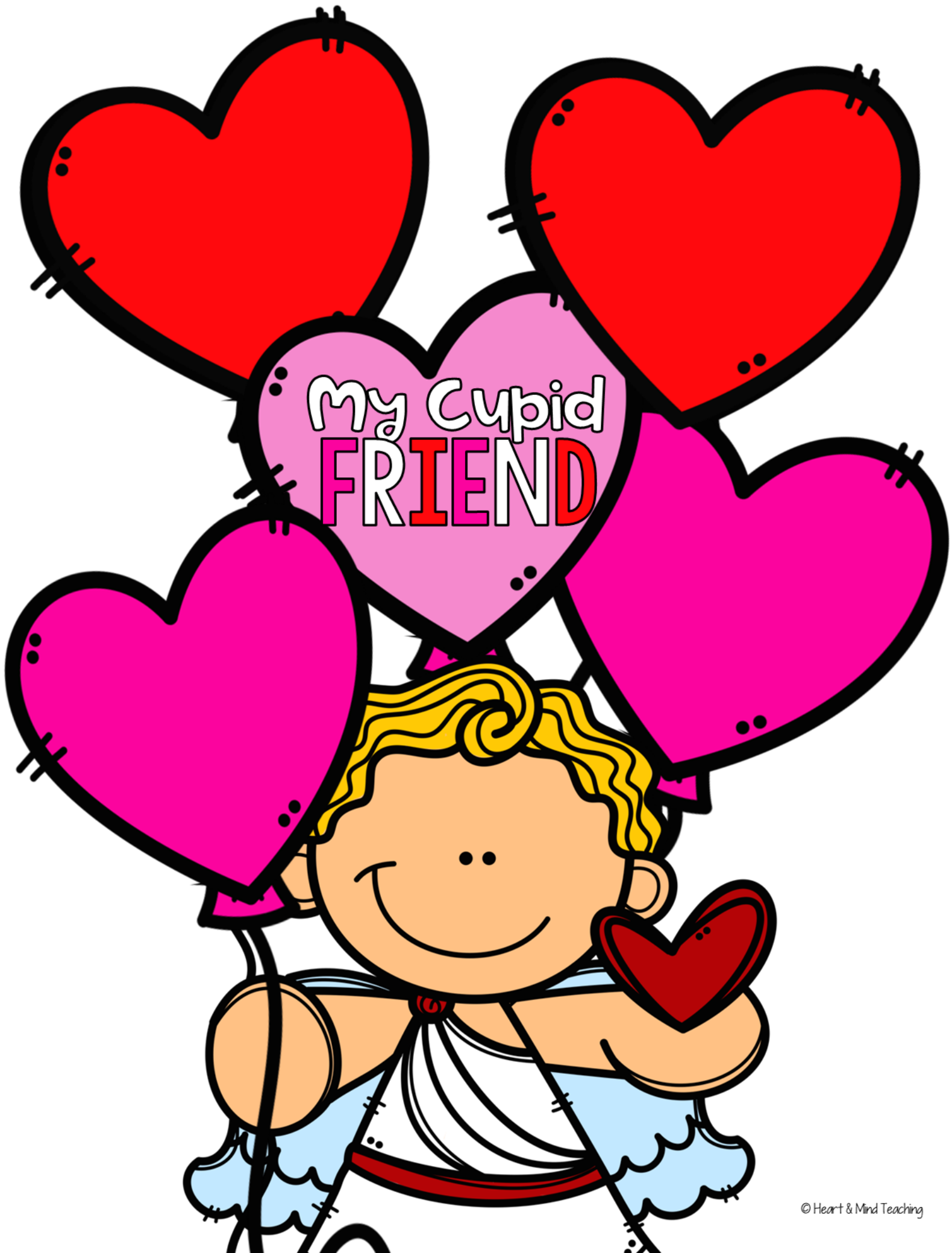
- *Students will each get a copy of one of the Build a Cupid Friend page. Explain to them using the sample provided, how the page will look when it is complete. Start at the top of the picture, ask "What would you want your friend to use their brain to do?" Allow students to participate and give responses. Have the students write down the responses they liked and would want their friend to have. Next move to the eyes, ask "What is something that a good friend does with their eyes." Again have the students provide responses and encourage them to write down on their "friend" the ones they like. Move to the following body parts: mouth, ears, hands, heart, feet, and ask for other general qualities they value in a friend. Once there are a good amount of friendship qualities listed, let the students color their "friend". While they are coloring, engage a discussion with questions such as "Why was it important for you to have a friend who you can trust?", "Which is the most important quality for you out of all of the ones you chose?". Point out similarities/differences that the group members chose. Ask "Are the traits you put down on your "friend" all traits that you have? Are there any traits that you are working on and would like to get better at?"
- *Show students the "My Cupid Friend" and explain that they are going to put qualities they are looking for in a friend on cupid's balloons, there are pre-made ones or they can make their own. You can also print them in black and white and have the students color them. Glue the balloons going up, building on top of the pink balloon, so it stays together (or you can use the version that already has them there). Explain that each Cupid will be unique because we are all looking for different traits within a friend.

ASCA Standards Alignment:

- *Mindset: Belief in development of whole self, including a healthy balance of mental, social/emotional and physical well-being. (M 1)
- *Behavior: Social Skills: Use effective oral and written communication skills and listening skills. (B-SS 1)
- *Behavior: Social Skills: Create positive and supportive relationships with other students. (B-SS 2)

SEL Competencies:

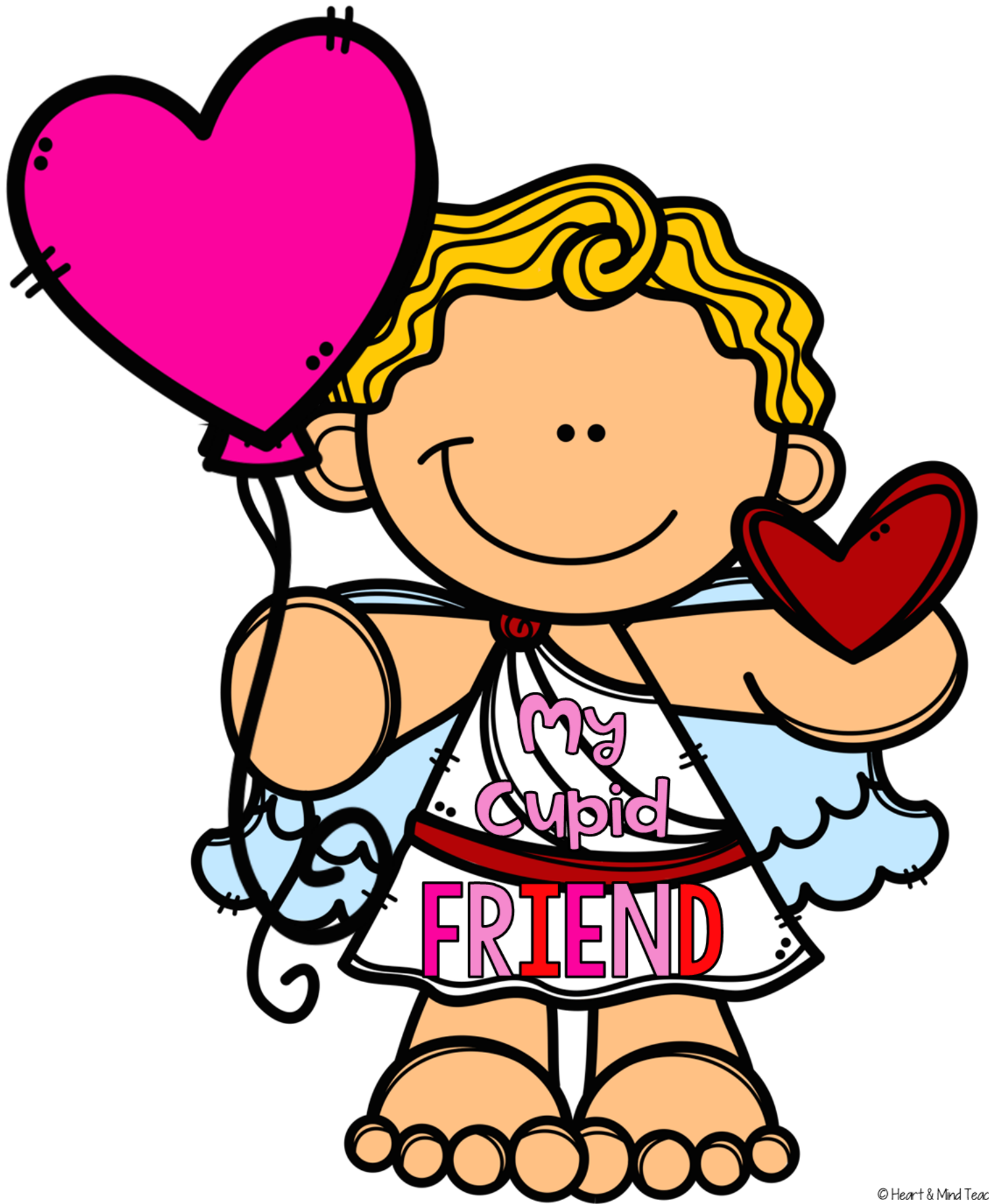
- *Self-awareness: recognizing strengths, accurate self-perception.
- *Relationship skills: relationship building, communication, social engagement.
- *Social-awareness: Respect for others, appreciating diversity.



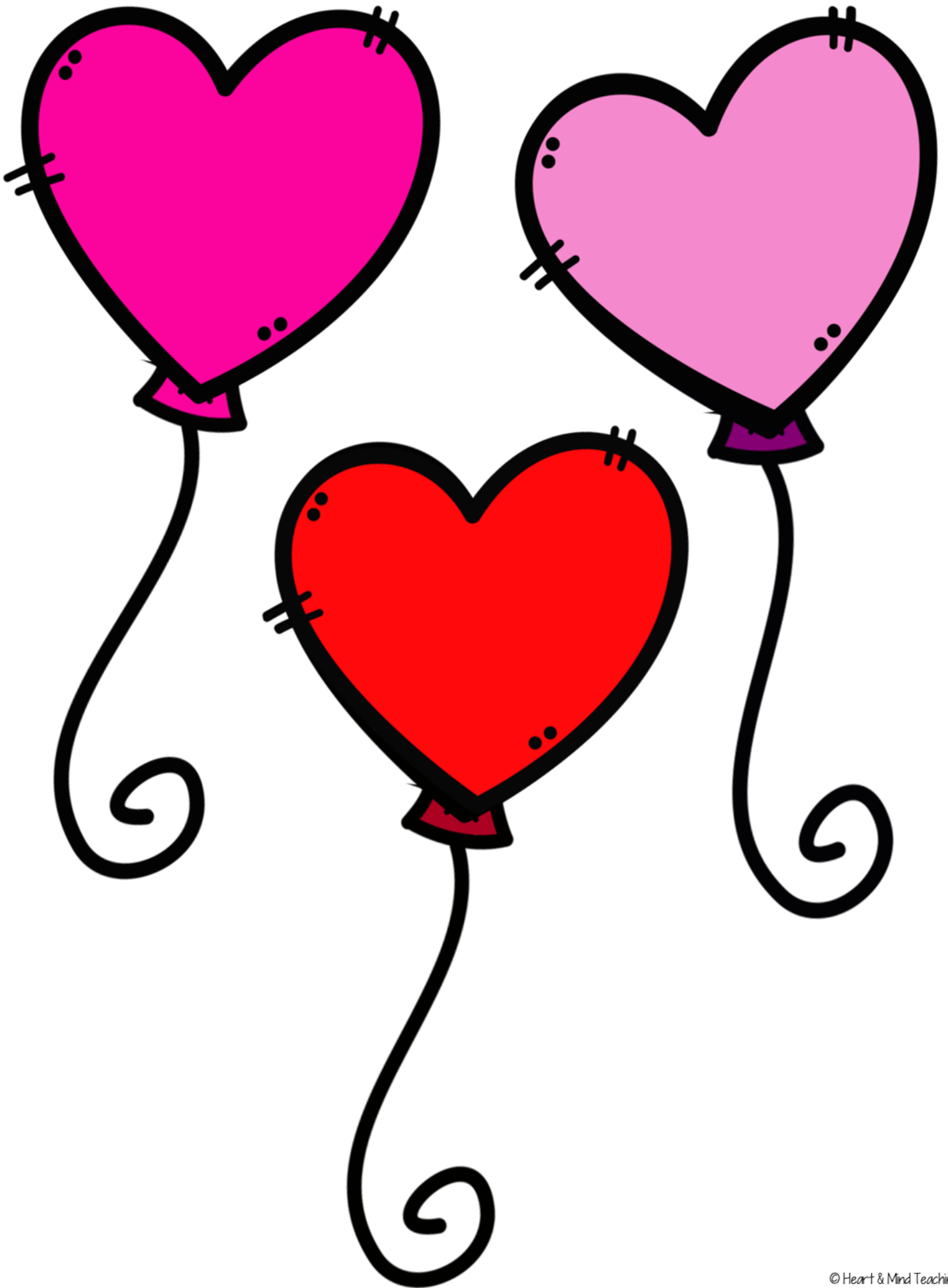
My Cupid
FRIEND



My Cupid
FRIEND







Three hearts are arranged in a triangle. The top-left heart is bright pink, the top-right heart is light pink, and the bottom-center heart is red. Each heart has a black outline, a small notch at the top, and two small black dots on its left and right sides. Each heart is attached to a black string that ends in a spiral. The text inside each heart is in a simple, black, sans-serif font.

Makes
good
choices.

Likes similar
things that I
do.

Looks at me
when we are
talking.



Has a
caring
heart.



Forgives me
when I make
mistakes.



Listens to
me when I
talk.



Smiles and
makes me
laugh.



Thinks
before
they speak.



Uses kind
words.



Gives me a
compliment.



Trust to
stand by
my side.



Shares
with me.



Keeps a
promise.



Gives me a
hug.



Uses
hands to
help not
hurt.



Is respectful
of me and
my things.



Includes
me.



Helps me if
I need it.

Build a Cupid

FRIEND

Makes good choices.

Thinks before they speak.

Looks at me when we are talking.

Smiles and makes me laugh.

Listens to me when I talk.

Uses hands to help not hurt.

Uses kind Words.

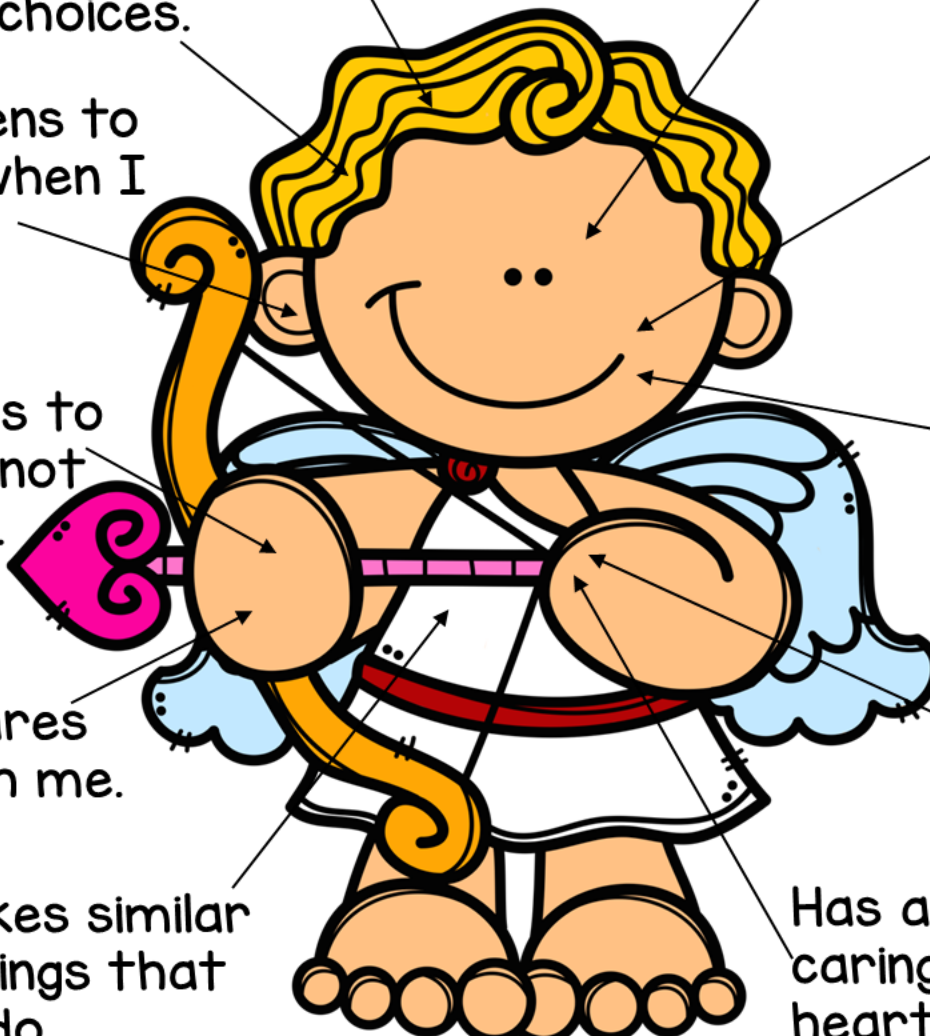
Shares with me.

Forgives me when I make mistakes.

Likes similar things that I do.

Has a caring heart.

Trust to stand by my side.



Build a Cupid

FRIEND

Makes good choices.

Thinks before they speak.

Looks at me when we are talking.

Listens to me when I talk.

Smiles and makes me laugh.

Uses hands to help not hurt.

Uses kind Words.

Shares with me.

Forgives me when I make mistakes.

Likes similar things that I do.

Has a caring heart.

Trust to stand by my side.



Build a Cupid

FRIEND



Build a Cupid

FRIEND



Why is it important for you to know what traits you value in a friend?



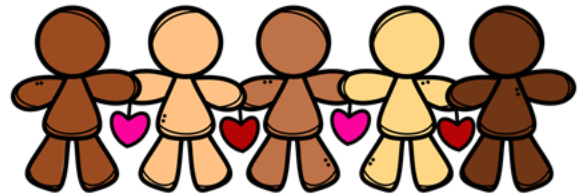
A large, empty rectangular box with a black border, intended for the student to write their answer to the question above.



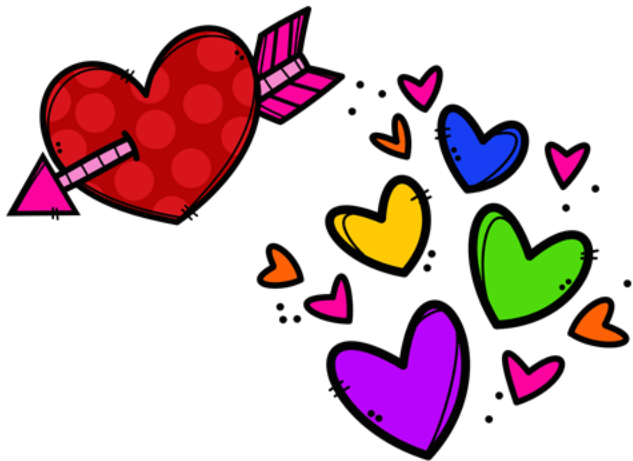
Which quality is the most important one to you?

A large, empty rectangular box with a black border, intended for the student to write their answer to the question above.

Are the traits you put down on your "friend", traits that you have?



Blank space for writing.



Are there any traits that you are working on and would like to get better at as a friend?

Blank space for writing.

Build a Cupid FRIEND

Session Objective:

- *Students will be able to identify traits that they value in a friend.
- *Students will participate and work together.
- *Students will self-reflect on their own traits.

Materials:

- *Build a Cupid Friend Activity
- *Pencils, Crayons, Scissors, Glue/Tape

Guiding Questions:

- *What are some traits that are valued in a friend?
- *What traits are not valued in a friend?

Session Details (about 30 minutes)

- *Students will each get a copy of one of the Build a Cupid Friend page. Explain to them using the sample provided, how the page will look when it is complete. Start at the top of the picture, ask "What would you want your friend to use their brain to do?" Allow students to participate and give responses. Have the students write down the responses they liked and would want their friend to have. Next move to the eyes, ask "What is something that a good friend does with their eyes." Again have the students provide responses and encourage them to write down on their "friend" the ones they like. Move to the following body parts: mouth, ears, hands, heart, feet, and ask for other general qualities they value in a friend. Once there are a good amount of friendship qualities listed, let the students color their "friend". While they are coloring, engage a discussion with questions such as "Why was it important for you to have a friend who you can trust?", "Which is the most important quality for you out of all of the ones you chose?". Point out similarities/differences that the group members chose. Ask "Are the traits you put down on your "friend" all traits that you have? Are there any traits that you are working on and would like to get better at?"
- *Show students the "My Cupid Friend" and explain that they are going to put qualities they are looking for in a friend on cupid's balloons, there are pre-made ones or they can make their own. You can also print them in black and white and have the students color them. Glue the balloons going up, building on top of the pink balloon, so it stays together (or you can use the version that already has them there). Explain that each Cupid will be unique because we are all looking for different traits within a friend.

ASCA Standards Alignment:

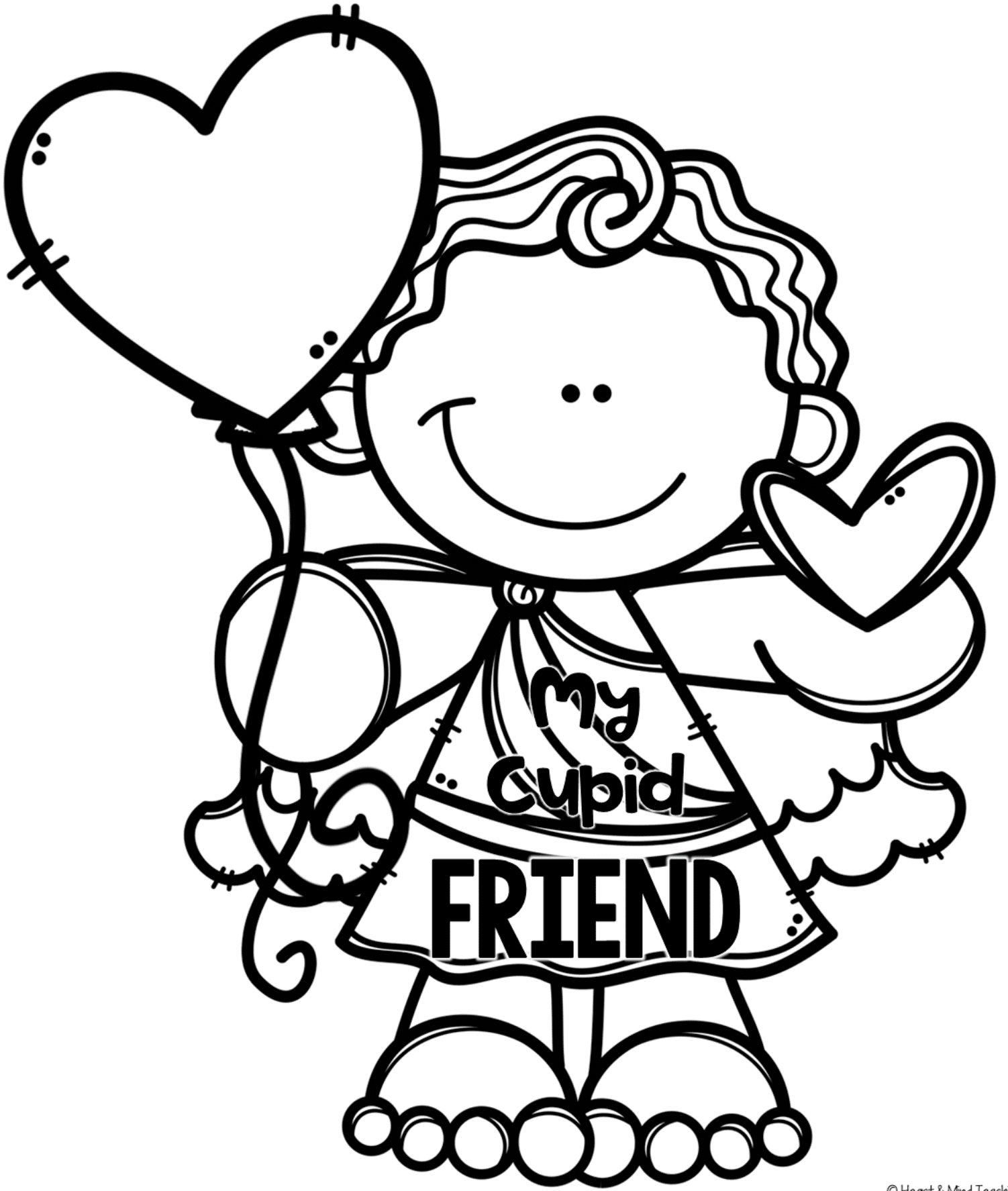
- *Mindset: Belief in development of whole self, including a healthy balance of mental, social/emotional and physical well-being. (M 1)
- *Behavior: Social Skills: Use effective oral and written communication skills and listening skills. (B-SS 1)
- *Behavior: Social Skills: Create positive and supportive relationships with other students. (B-SS 2)

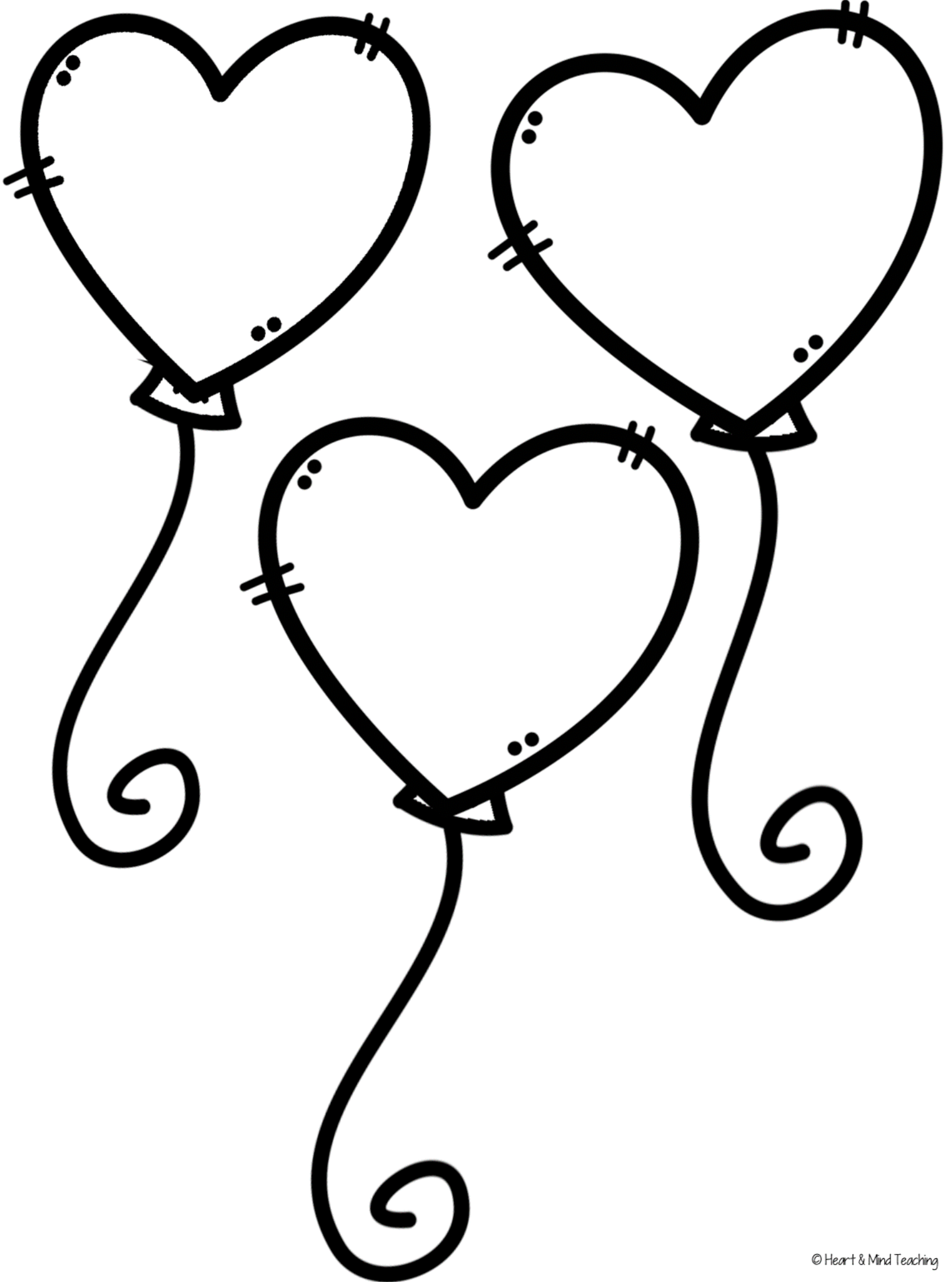
SEL Competencies:

- *Self-awareness: recognizing strengths, accurate self-perception.
- *Relationship skills: relationship building, communication, social engagement.
- *Social-awareness: Respect for others, appreciating diversity.



My Cupid
FRIEND



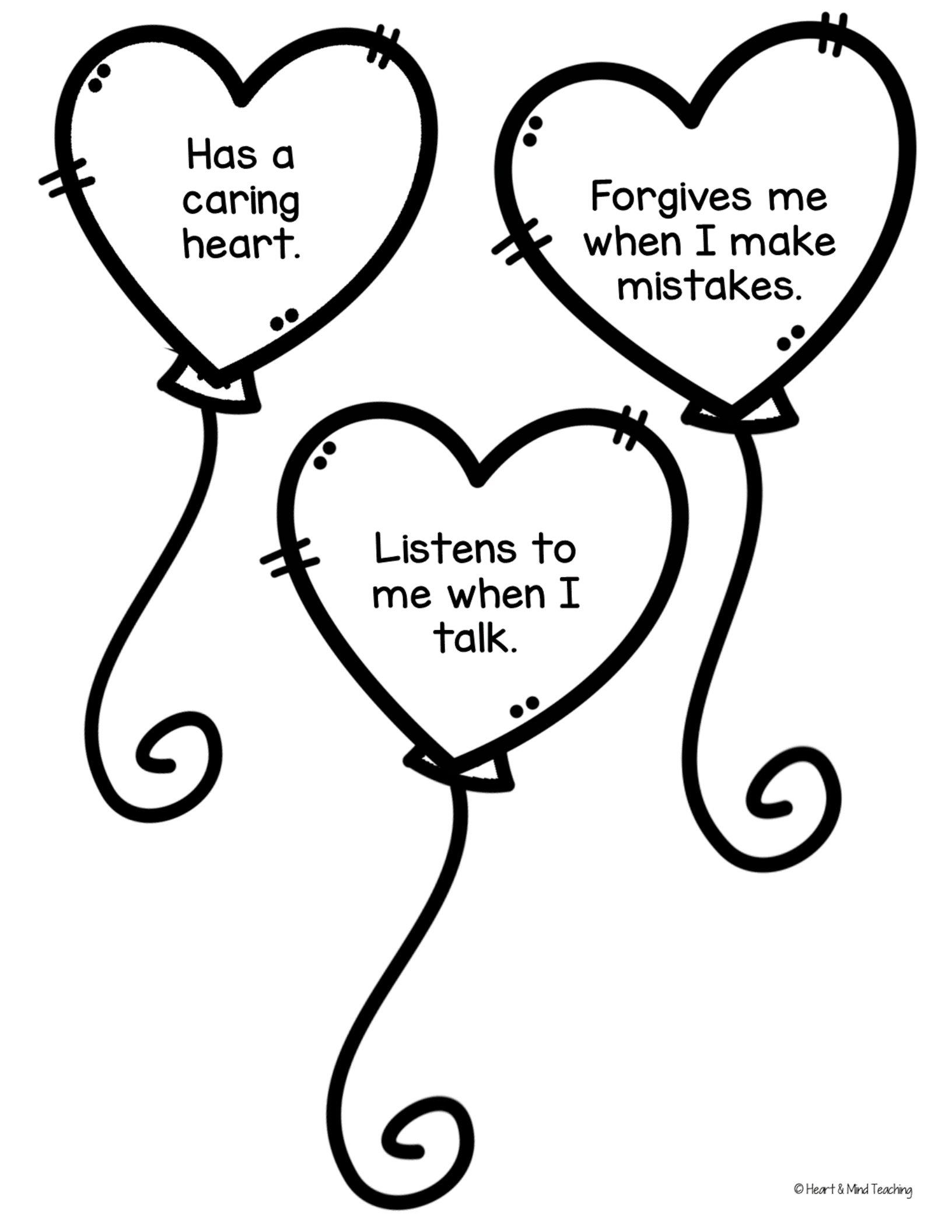




Makes
good
choices.

Likes similar
things that I
do.

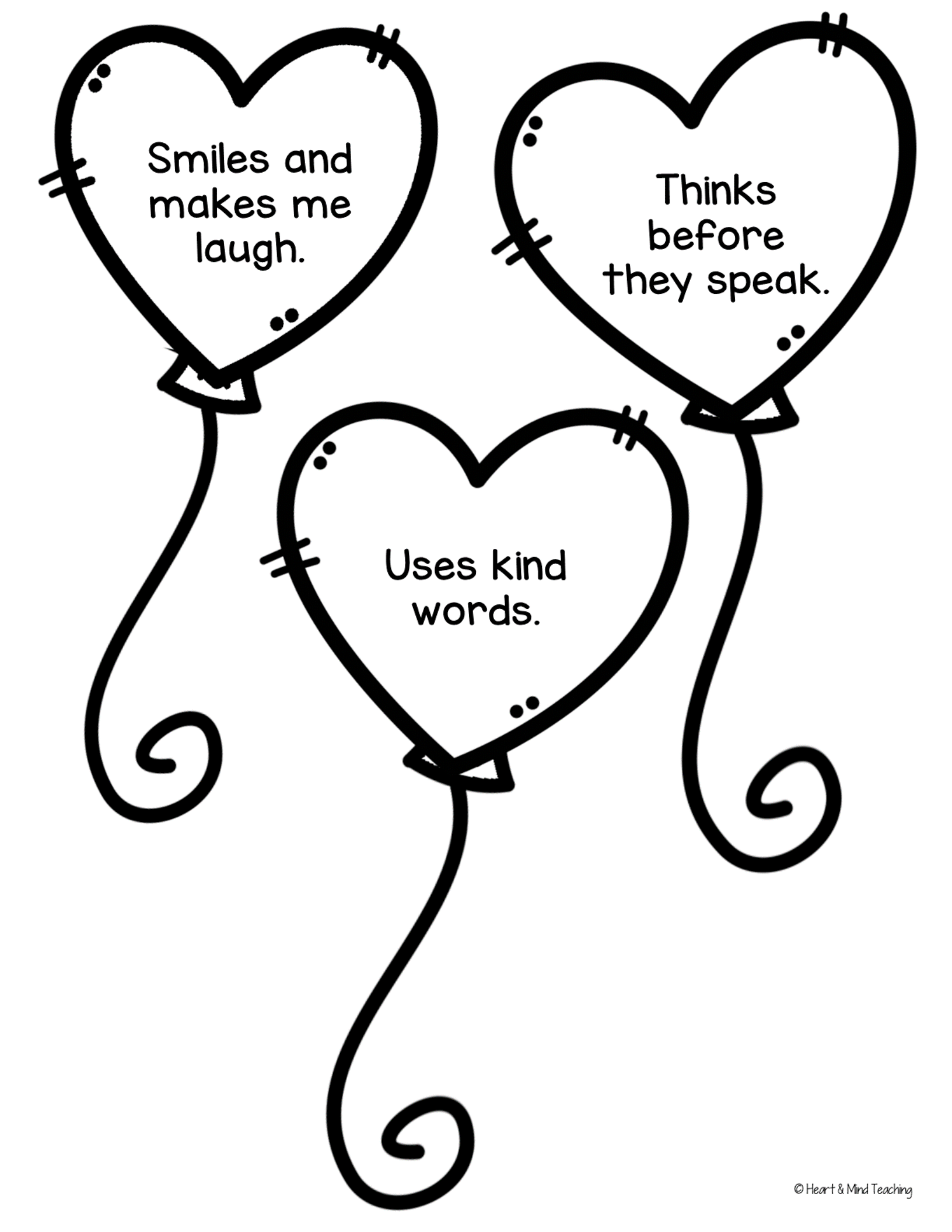
Looks at me
when we are
talking.

Three hearts are arranged on a single vine that starts from the bottom and branches out to support each heart. The vine has decorative swirls at the end of each branch. Each heart is outlined in black and contains a different phrase. The hearts are positioned at the top left, top right, and center of the page.

Has a
caring
heart.

Forgives me
when I make
mistakes.

Listens to
me when I
talk.

Three hearts are arranged vertically on a string. The top heart is on the left, the middle heart is in the center, and the bottom heart is on the right. Each heart has a thick black outline and contains a positive trait. The string is a simple black line that loops around the hearts and ends in three decorative swirls at the bottom. Each heart has two small black dots and a short horizontal line on its left side, resembling a fastener or a decorative element.

Smiles and
makes me
laugh.

Thinks
before
they speak.

Uses kind
words.

Three hearts are arranged on a single vine that has three leaves and three spiral curls. Each heart is outlined in black and contains a different phrase. The vine starts at the bottom center and branches out to support the three hearts. The top-left heart contains the text 'Gives me a compliment.', the top-right heart contains 'Trust to stand by my side.', and the bottom-center heart contains 'Shares with me.' Each heart has two small black dots and two short black lines on its outline, resembling stitches or staples.

Gives me a
compliment.

Trust to
stand by
my side.

Shares
with me.



Three hearts are arranged on a single vine that starts from the bottom and branches out to support each heart. The vine has decorative swirls at the end of each branch. Each heart is outlined in black and contains a specific phrase. The hearts are positioned at the top left, top right, and bottom center of the page.

Is respectful
of me and
my things.

Includes
me.

Helps me if
I need it.

Build a Cupid

FRIEND

Makes good choices.

Thinks before they speak.

Looks at me when we are talking.

Listens to me when I talk.

Smiles and makes me laugh.

Uses hands to help not hurt.

Uses kind Words.

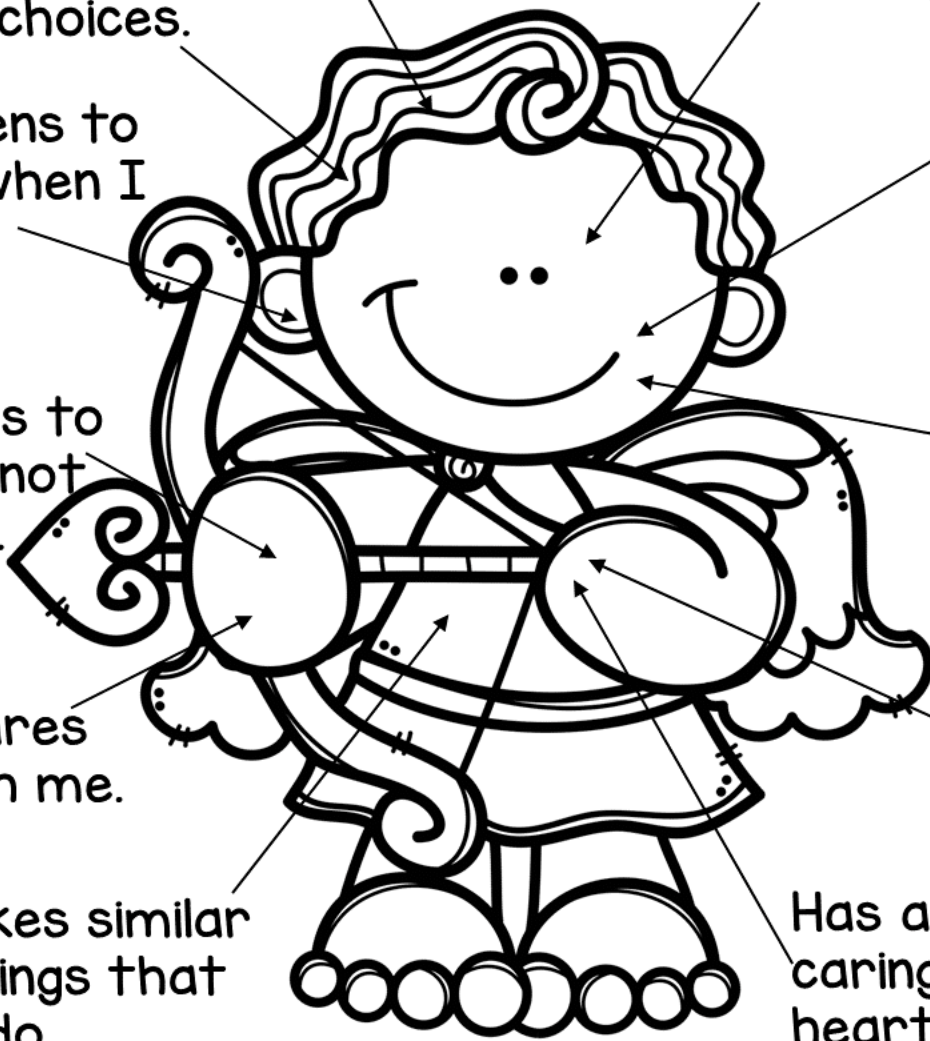
Shares with me.

Forgives me when I make mistakes.

Likes similar things that I do.

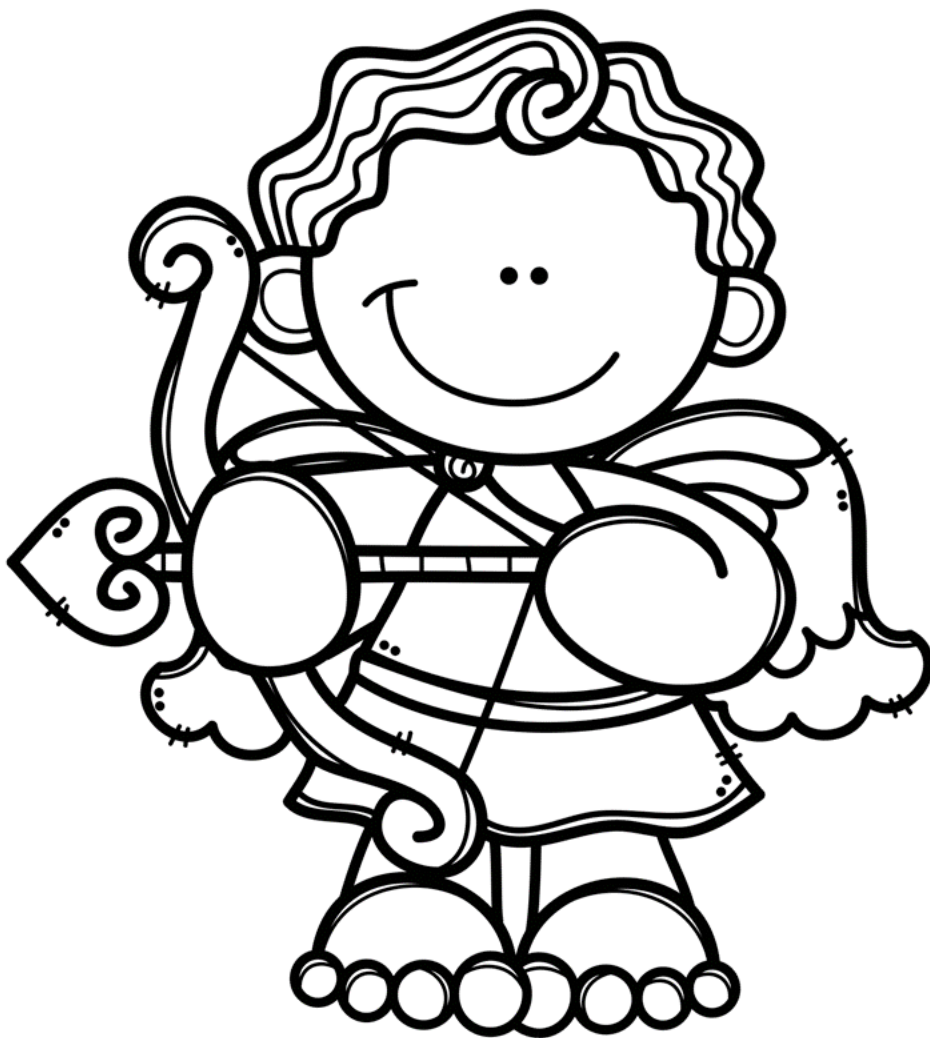
Has a caring heart.

Trust to stand by my side.



Build a Cupid

FRIEND



Why is it important for you to know what traits you value in a friend?



A large empty rectangular box for writing an answer to the question above.



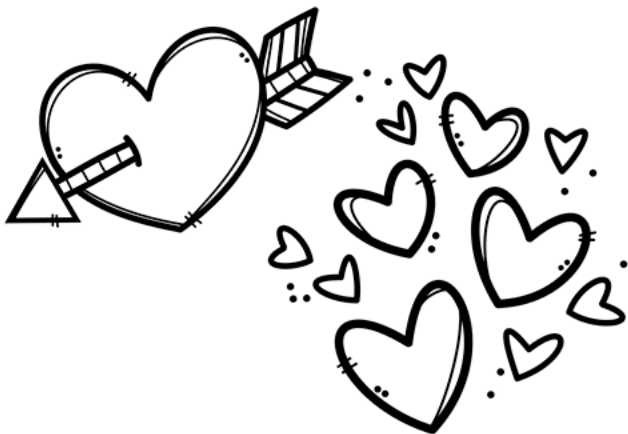
Which quality is the most important one to you?

A large empty rectangular box for writing an answer to the question above.

Are the traits you put down on your "friend", traits that you have?



A large empty rectangular box for writing an answer to the question above.



Are there any traits that you are working on and would like to get better at as a friend?

A large empty rectangular box for writing an answer to the question above.

GOOGLE CLASSROOM

Your resource comes with a digital version for use in Google Slides via Google Classroom. Follow these steps to upload your resource.

1 Click here  [Build a Cupid Friend](#)

2 You will be prompted to make a copy of the resource. Click on the blue box that says “Make a copy” and the resource will go directly into your Google drive.

Google Drive

Copy document

Would you like to make a copy of Career Interest Inventory?

Make a copy



3 Go to your Google Drive and locate the copy of the file. You can rename the file at this point or add/delete slides.

4 Next, go to your Google Classroom and add an assignment. Select the Google Drive Symbol and select the resource you want to assign.

5 From here, you should see a grey box that says “Students can view file.” Click the grey box. A dropdown menu should appear. Select, “Make a copy for each student.”

YOU HAVE TO MAKE A COPY FOR EACH STUDENT!

Otherwise they will all be editing the same file.

Click “Assign” in the top right corner if you’re ready to post!

This product is meant to be used in “edit” mode (not “presentation” mode). Edit mode is the only mode that allows drag & drop and writing in text boxes.

Helpful links for using Google Classroom:

[Teacher Tips for using Google Classroom \(TPT blog\)](#)

[Getting Started with Google Classroom \(youtube video\)](#)

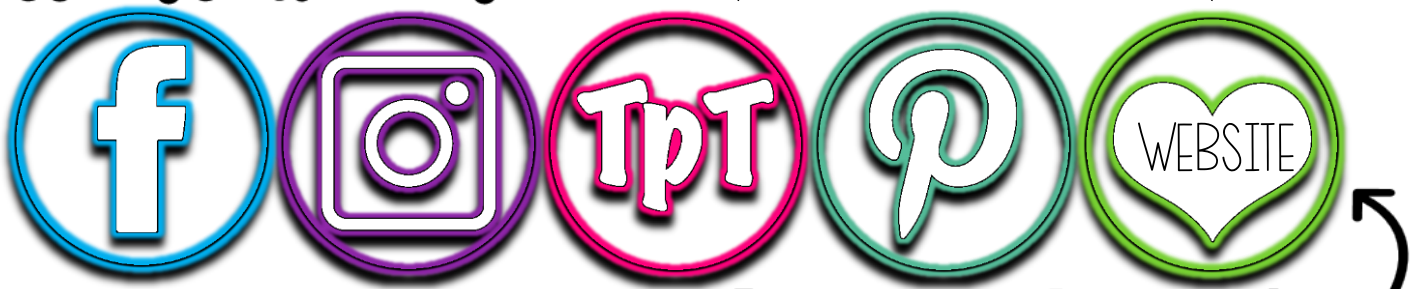
ABOUT THE AUTHOR



Hi, I'm Ashley
SCHOOL COUNSELOR
Blogger & Creator

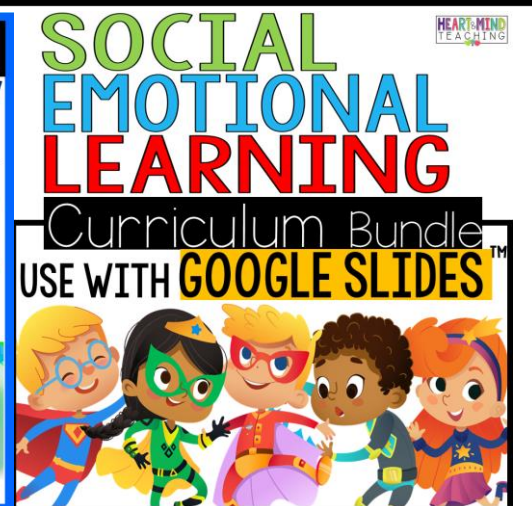
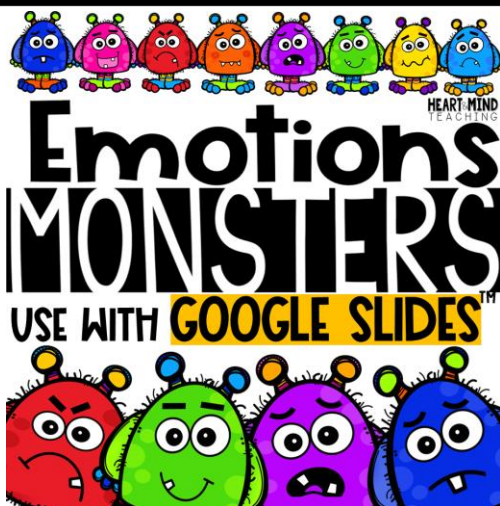
I have a B.A. in Psychology and an M.A. in School Counseling. I have a passion for creating fun and engaging resources for Counseling and Social Emotional Learning. I am a wife, and mother to two young boys. Thank you for supporting my little shop.

Click the icons to connect with me



Access my Freebie Library

RECOMMENDED RESOURCES



TERMS OF USE

© Heart and Mind Teaching, 2021. All rights reserved. Purchase of this item entitles the purchaser the right to reproduce for classroom, personal, and google classroom use only. Use in multiple classrooms, requires the purchase of additional licenses. Redistribution or duplication of this product is strictly forbidden without the written permission of the publisher. Copying any part of this product and placing it on a publicly accessible website is strictly forbidden and is a violation of the Digital Millennium Copyright Act (DMCA). You may post this for single-classroom use on a password protected student site such as google classroom. **You may NOT post my products on any public, for-profit, or commercial websites or entities.** Please do not sell or distribute any part of this as your own. Thank you for abiding by universally accepted codes of professional ethics while using this product.

Please feel free to contact me if you have any questions or feedback about this resource at:

heartandmindteaching@gmail.com



CREDITS



[Gayle McGlaulin](#)