

o MUSIC  city COUNSELOR

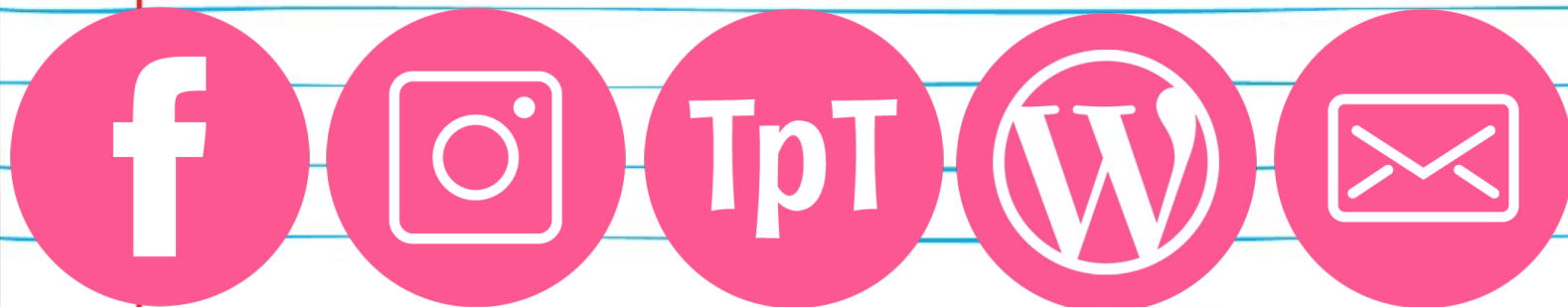
THANK YOU FOR YOUR PURCHASE!



Hey y'all, Laura here! I so appreciate when you please take a moment to leave a review on my resources on my TpT Store. Thanks for your support! Enjoy the resource!

♥ *laura oathout*

LET'S CONNECT!



For helpful ideas, engaging resources, and freebies, please check out my website and membership!

o ♥ **WEBSITE:** www.musiccitycounselor.com

♥ **MEMBERSHIP:** www.counselorcollab.com

ASCA Mindsets & Behaviors:

Category 1: Mindset Standards

- M 1: Belief in development of whole self, including a healthy balance of mental, social-emotional, and physical well-being.
- M 2: Sense of acceptance, respect, support, and inclusion for self and others in the school environment.

Category 2: Behavior Standards

- B-SMS 1: Responsibility for self and actions.
- B-SMS 2: Demonstrate self-discipline and self-control.
- B-SS 2: Create positive and supportive relationships with other students.
- B-SS 9: Demonstrate social maturity and behaviors appropriate to the situation and environment.

DIRECTIONS:

This lesson will take approximately 30 minutes to complete.

1. Review the instructional posters that teach students about "Green Light Choices" and "Red Light Choices." Green Light Choices are safe, helpful, and kind. Red Light Choices are unsafe, unhelpful, and unkind.
2. Play the behavior sorting game with students.
3. Complete any of the included coloring pages or worksheets with students.
4. Give the certificate to students who are "caught making Green Light Choices."

Sorting Game:

Full color and black/white materials are included for you so please print the pages that best match your printing needs!

First, please print the sorting mat and behavior cards. Please cut out the behavior cards.

If you are using this activity with a large group of students, I recommend displaying it on a document camera/projector so the whole class can see it.

48 scenario cards are included so in a standard elementary class you have enough cards for each child to have multiple turns.

If playing with a whole class of students, I like to have students take turns coming up to the front of the room, choosing a behavior card, and showing it to the class. I suggest displaying their card on the document camera so everyone can see it. Then, I ask the child to explain what they think is happening on the card. Then, the child places the card on the "Green Light Choice" side of the mat if the scenario shows a positive behavior, OR on the "Red Light Choice" side if the scenario shows a negative behavior. I like to process each behavior with my students and talk through why it is a Green Light Choice or a Red Light Choice. If it's a Red Light Choice, we discuss what the student could do better next time.

If playing with a small group or individual student, the activity can be played the same way, without the need for the document camera.

Posters

GREEN LIGHT CHOICES

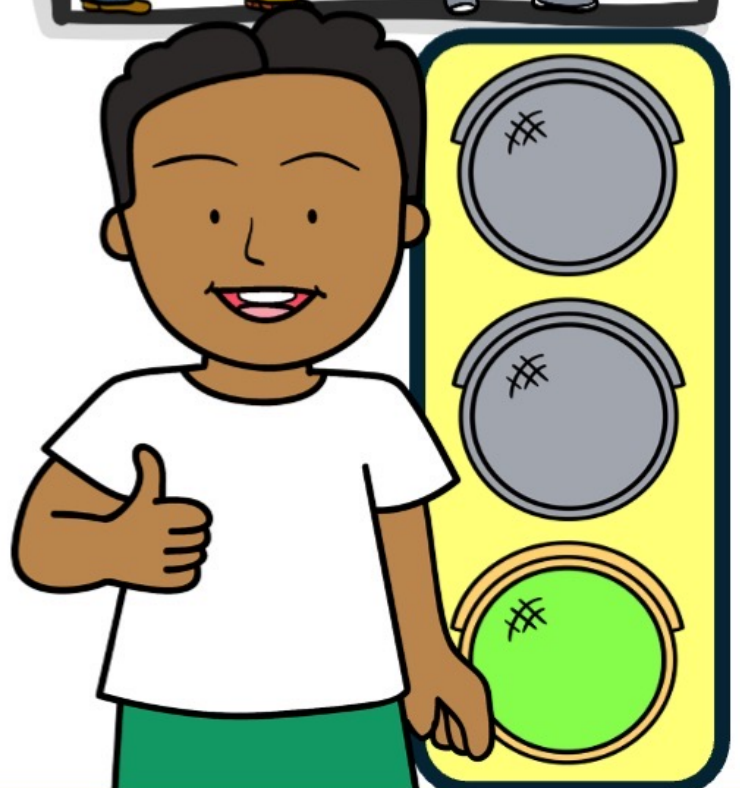
HELPFUL



SAFE



KIND



RED LIGHT CHOICES

UNHELPFUL



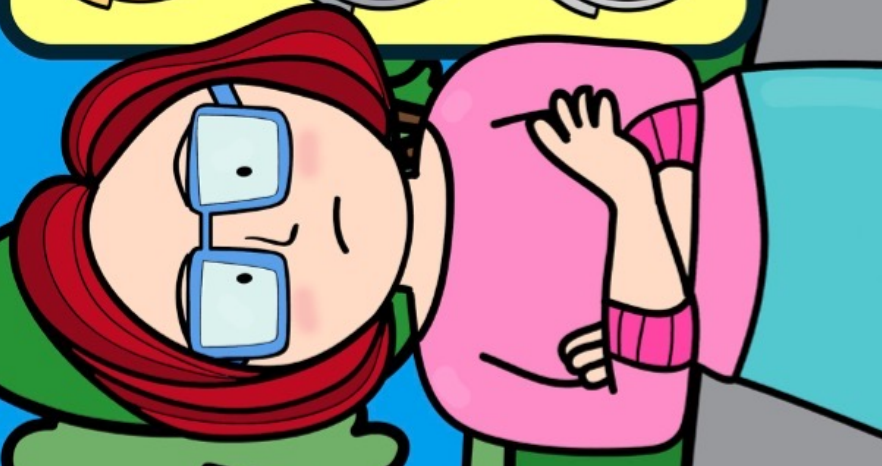
UNSAFE



UNKIND



Sorting Mat



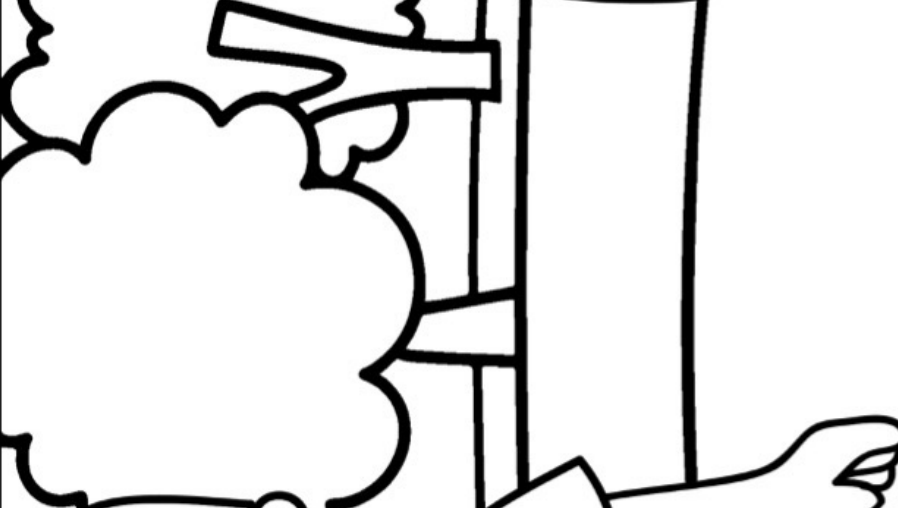
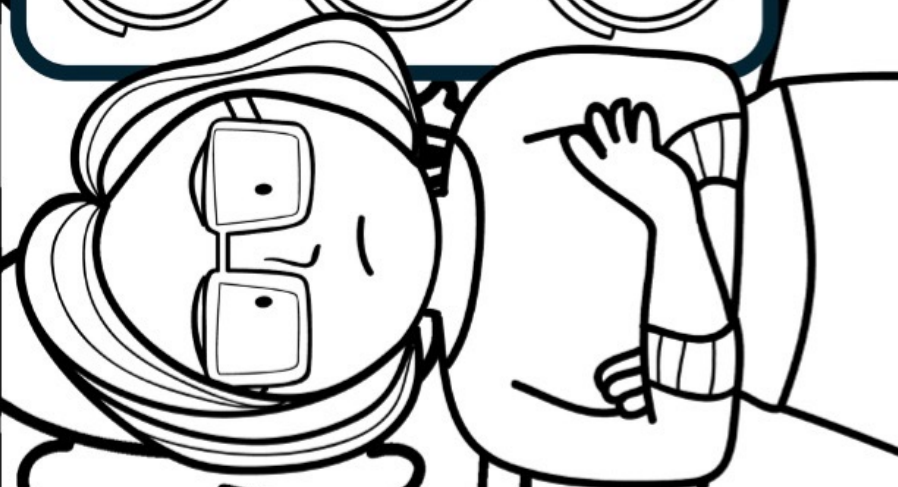
**RED LIGHT
CHOICES**

© Music City Counselor

OR



**GREEN LIGHT
CHOICES**

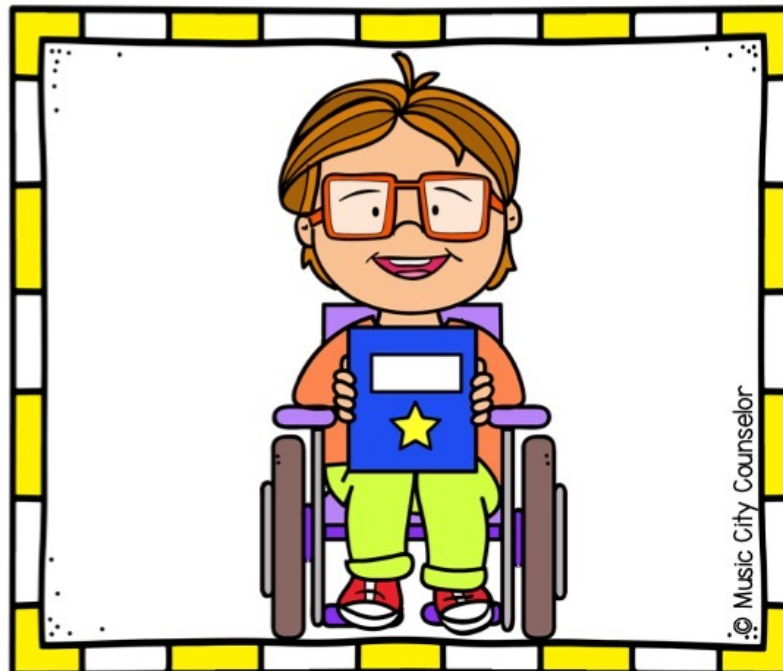
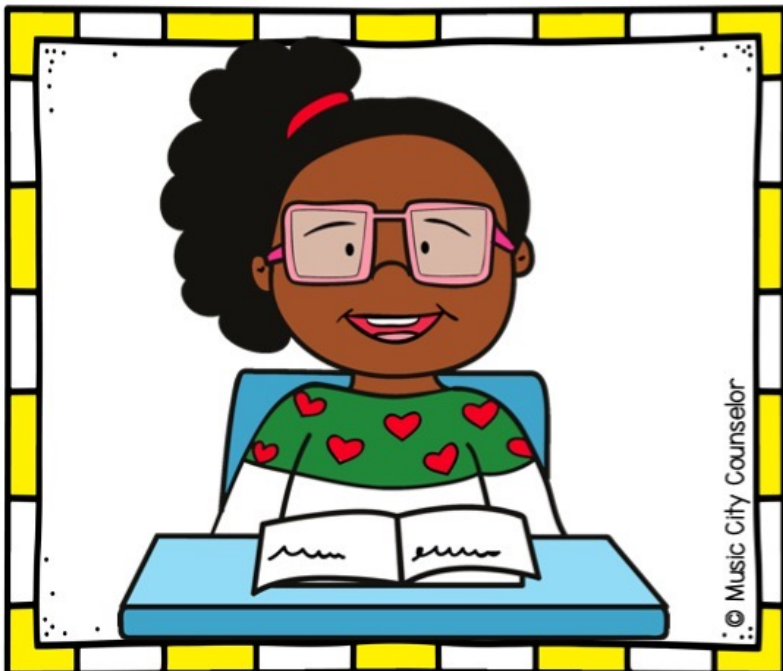
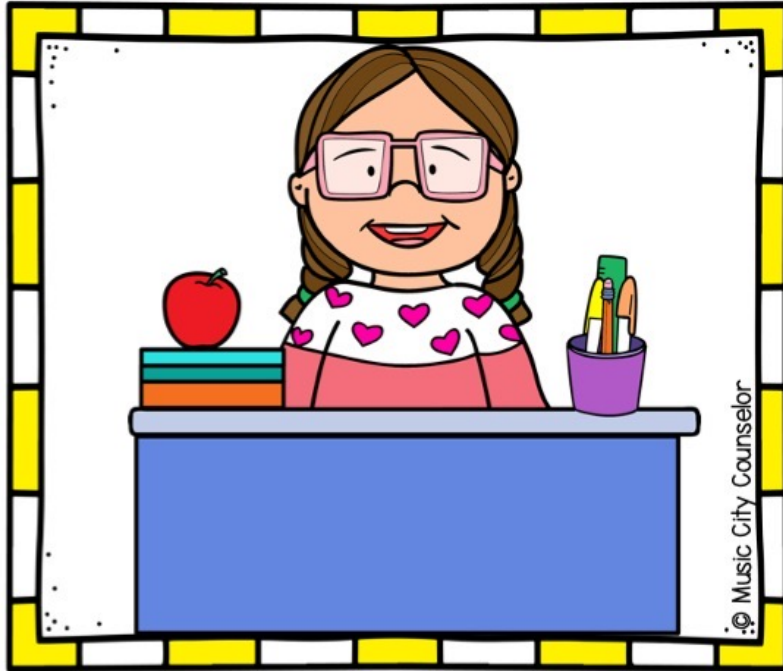


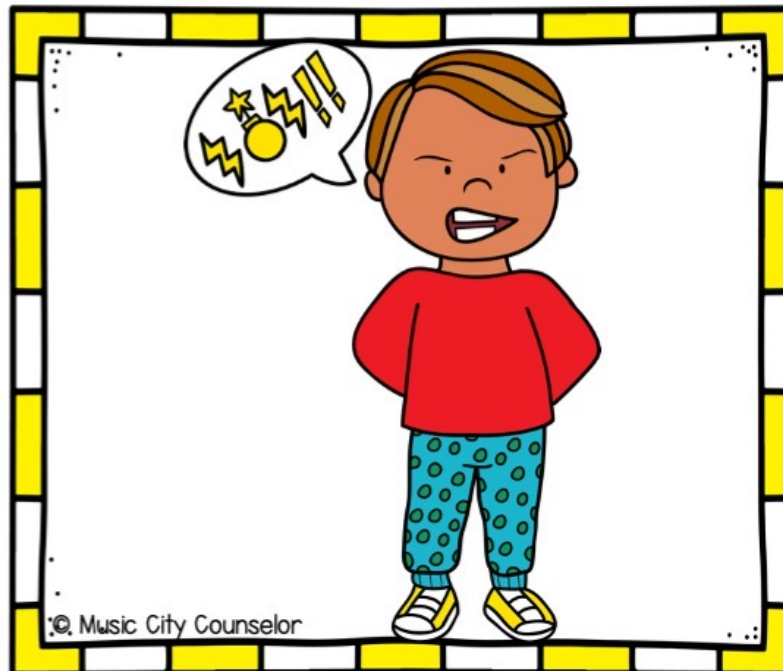
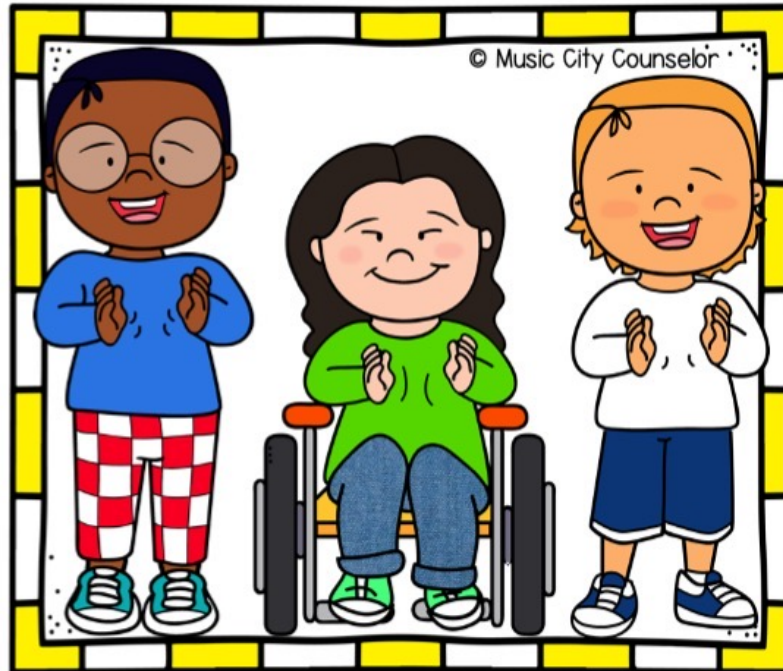
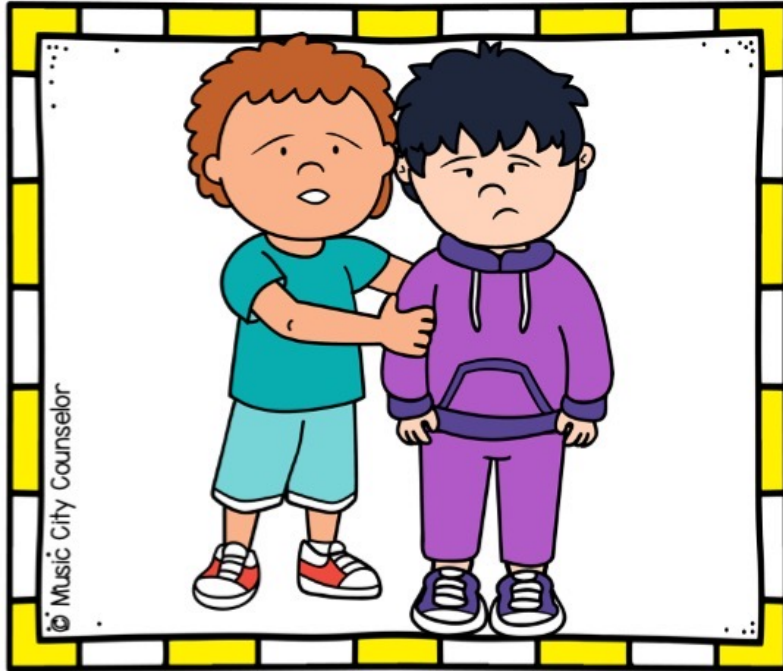
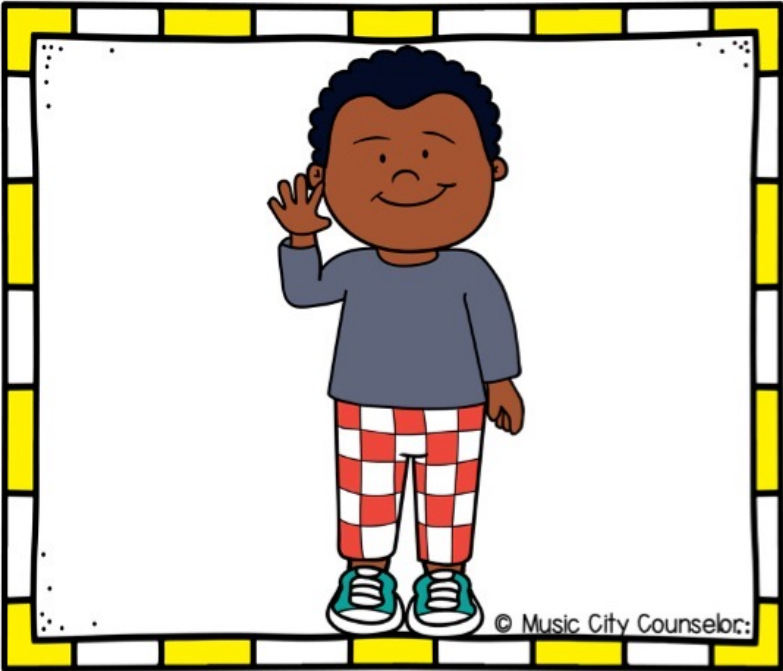
**RED LIGHT
CHOICES**

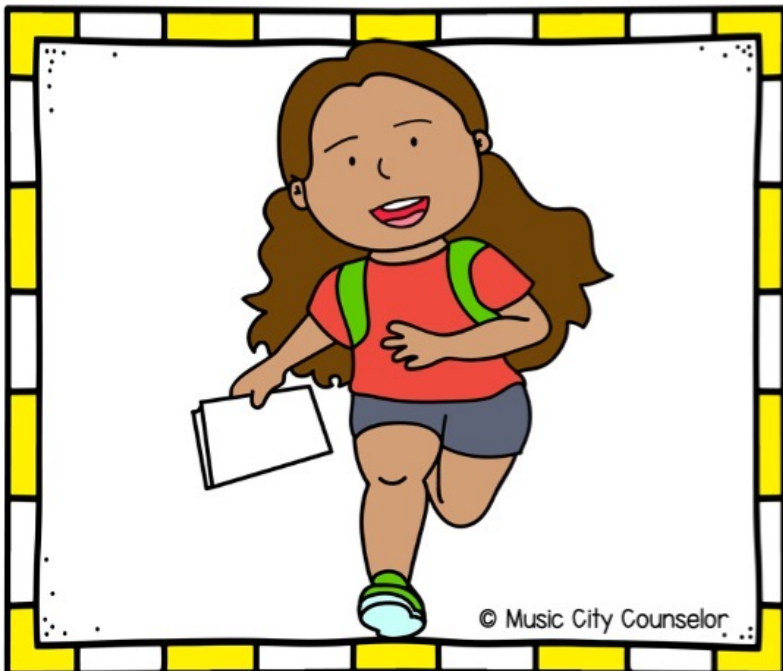
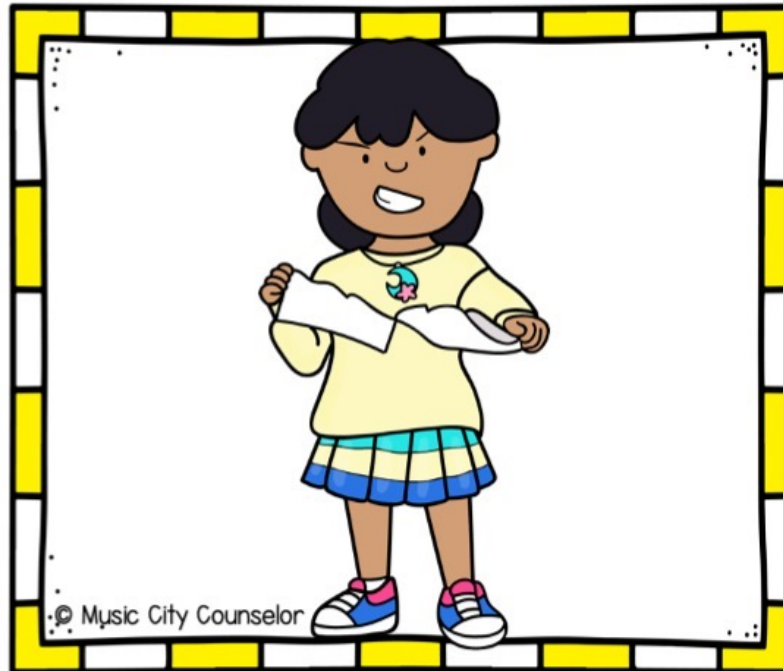
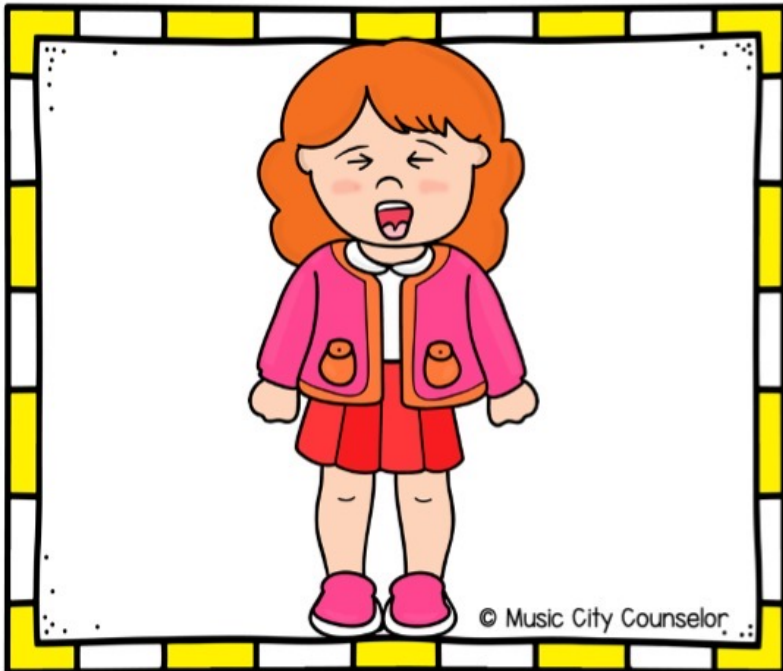
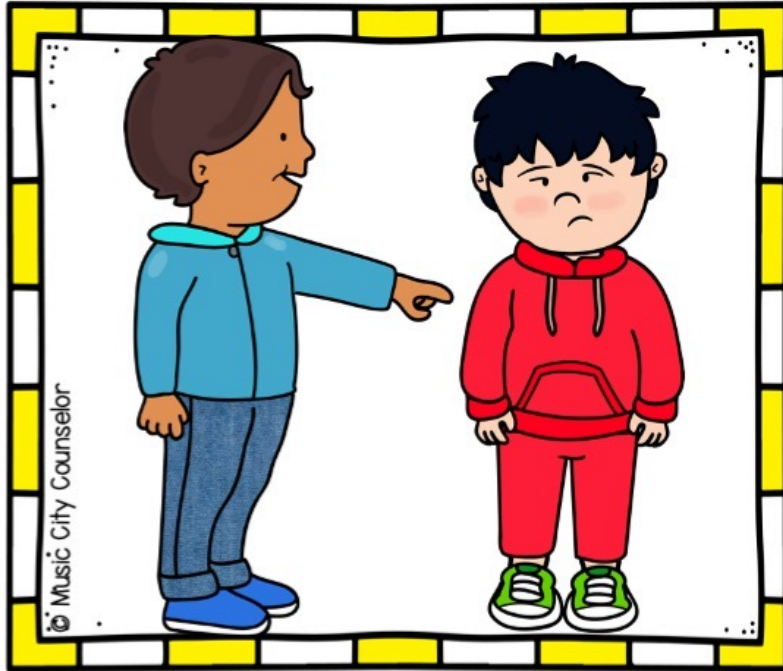
OR

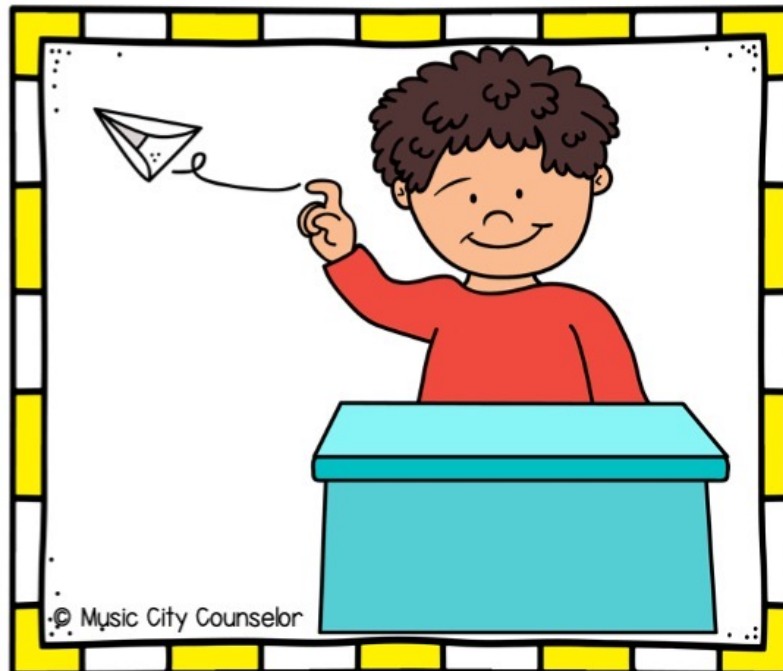
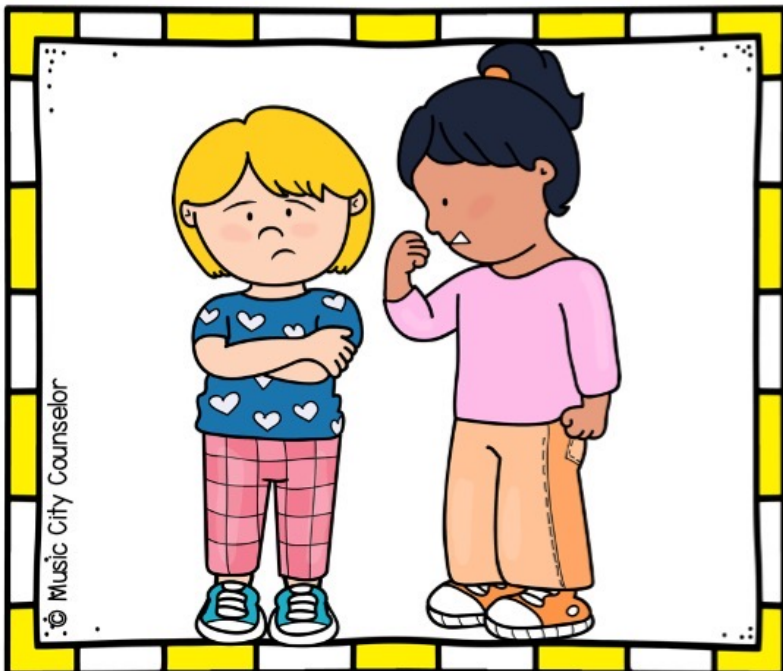
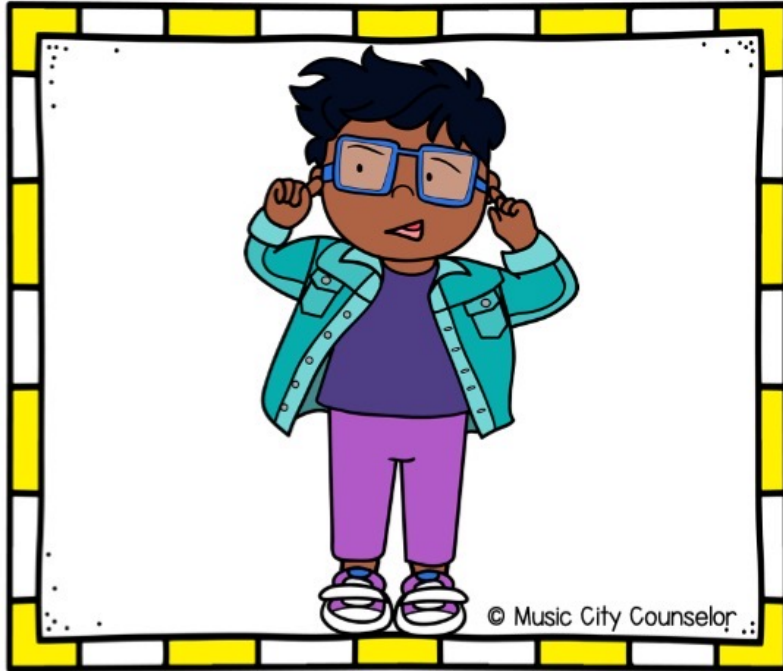
**GREEN LIGHT
CHOICES**

Sorting Cards









© Music City Counselor



© Music City Counselor



© Music City Counselor



© Music City Counselor

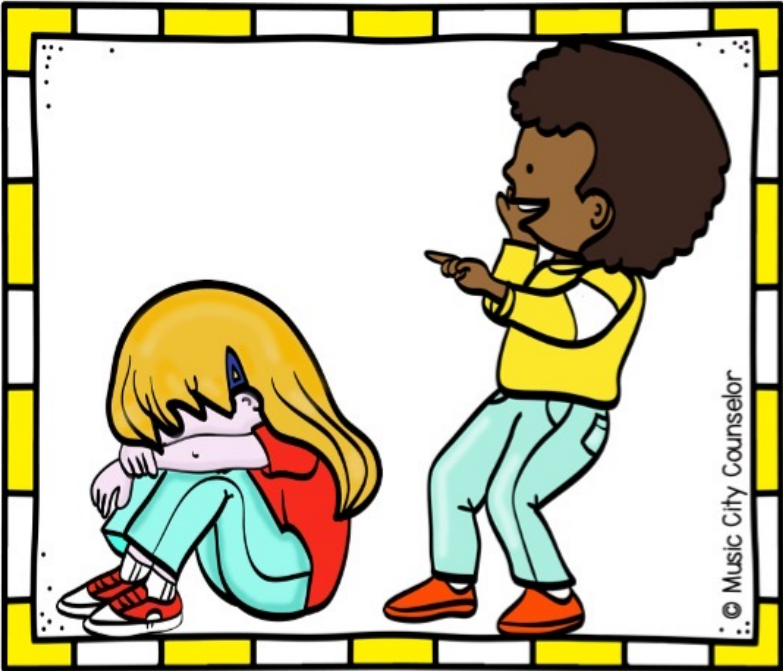


© Music City Counselor



© Music City Counselor

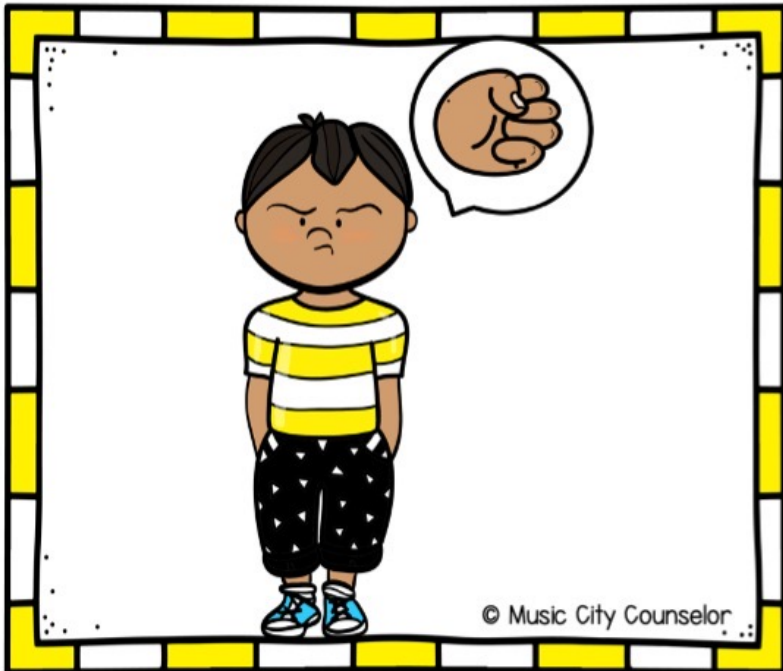




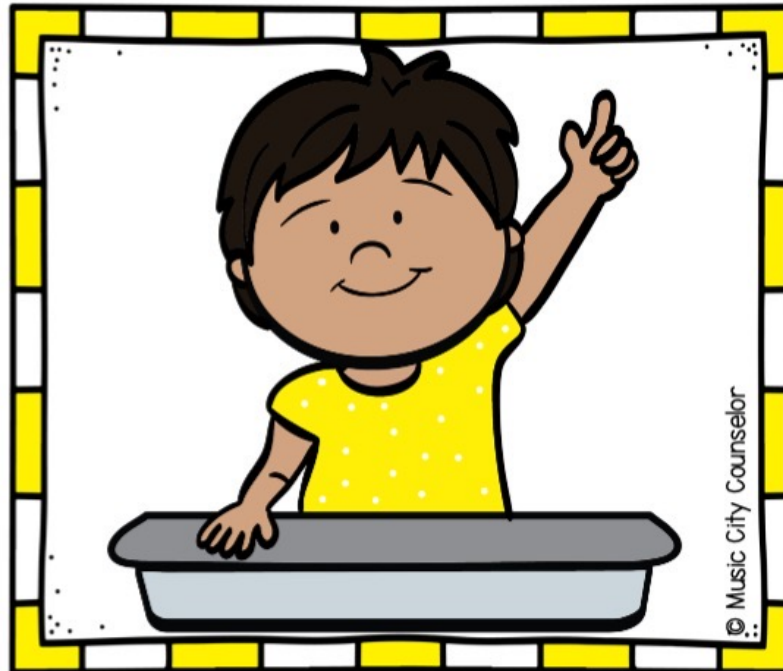
© Music City Counselor



© Music City Counselor



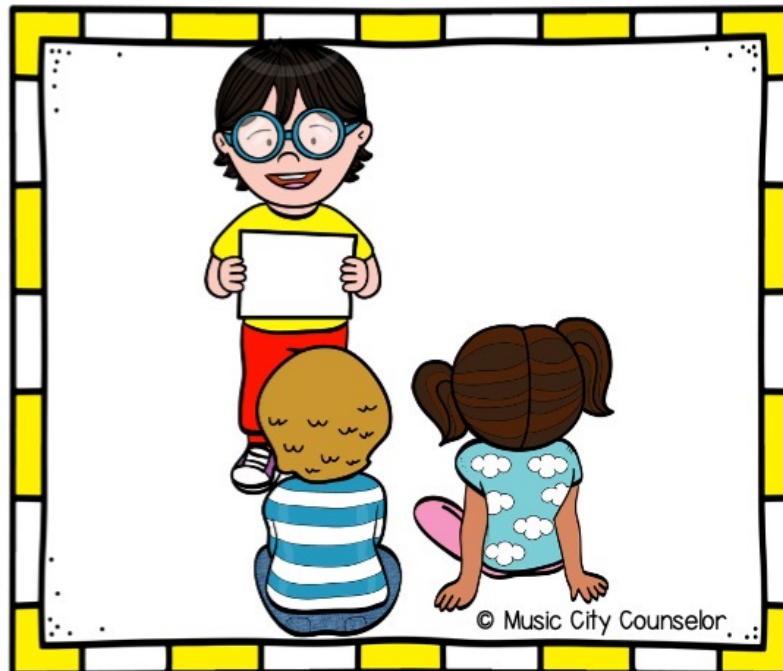
© Music City Counselor



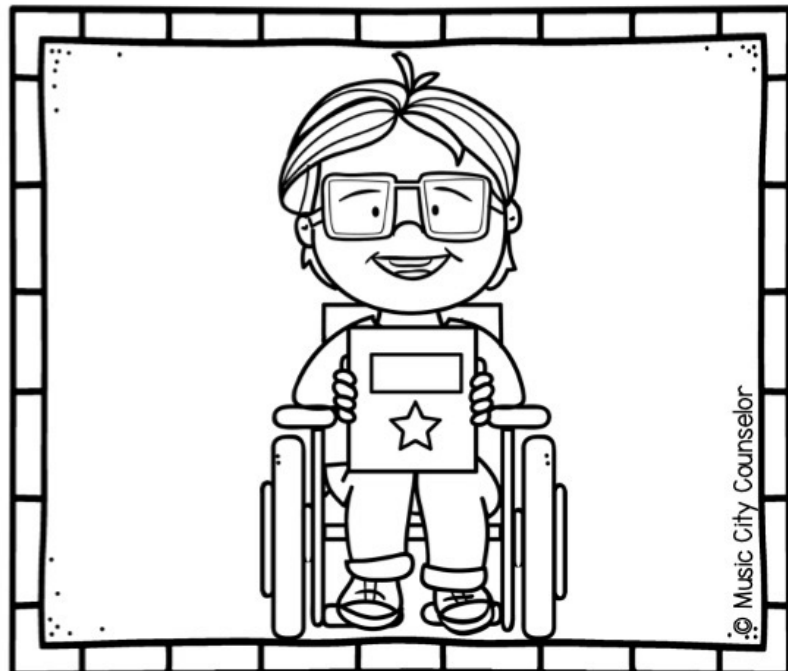
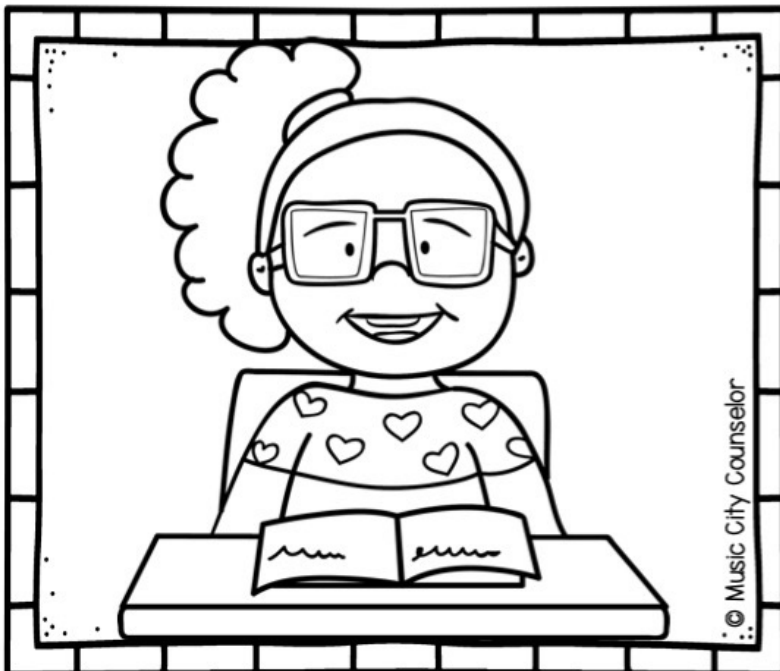
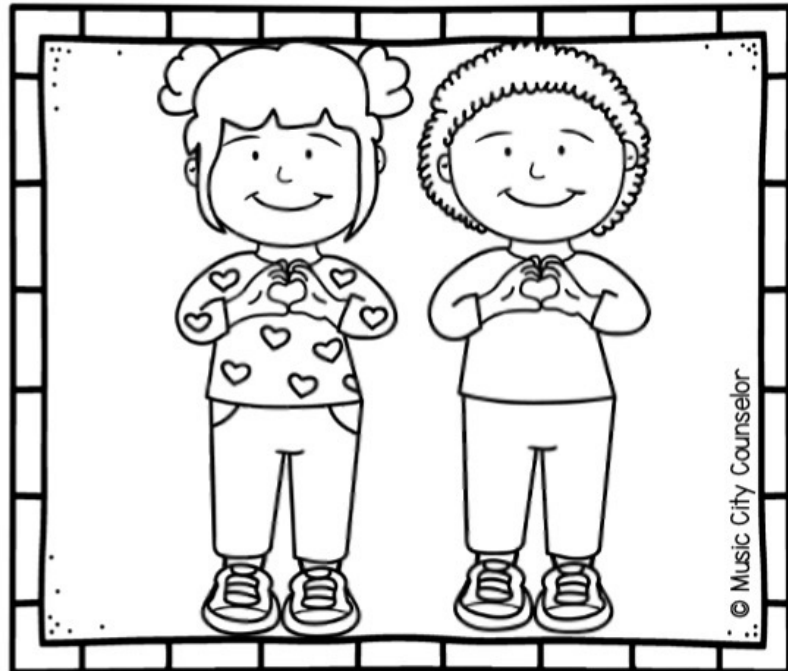
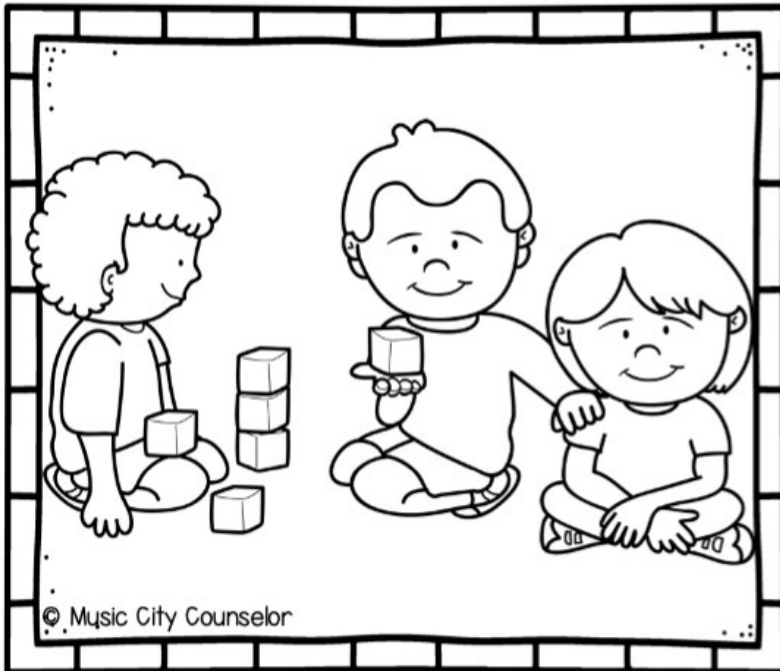
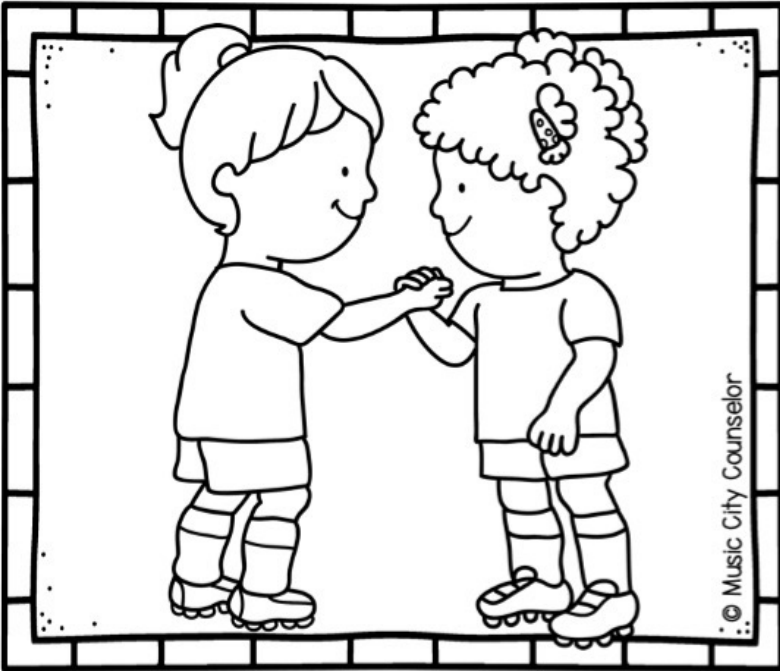
© Music City Counselor

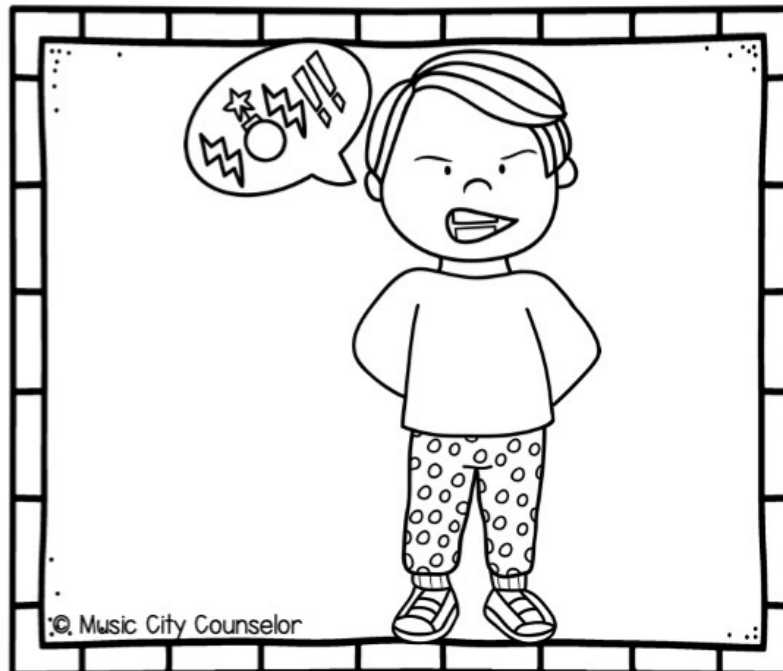
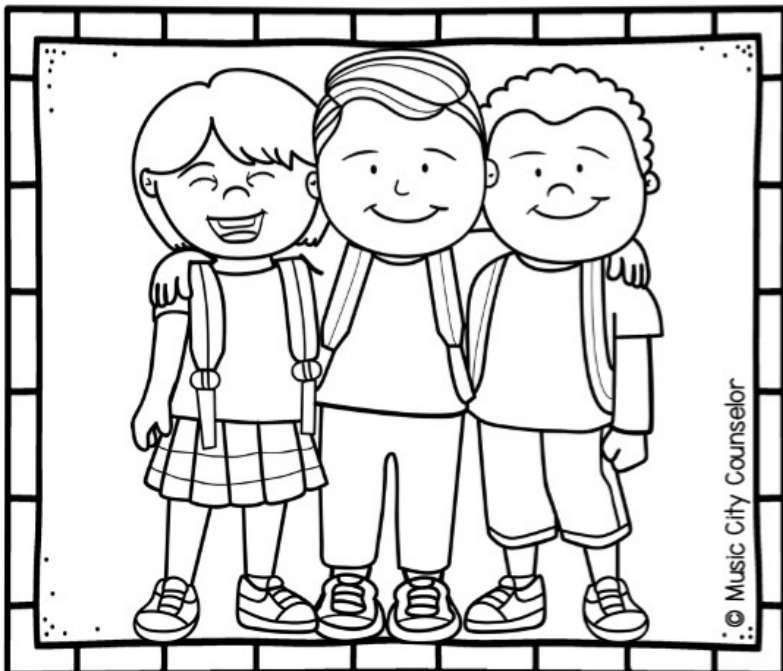
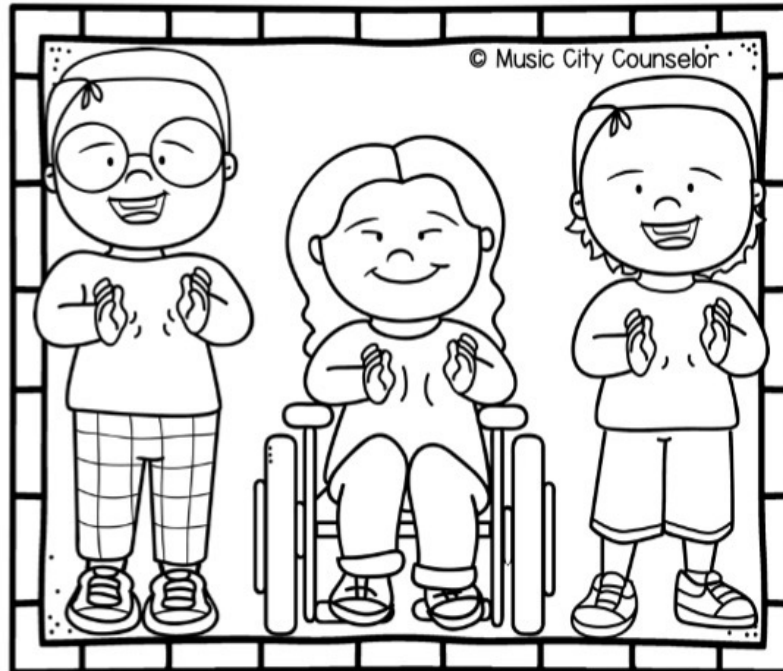
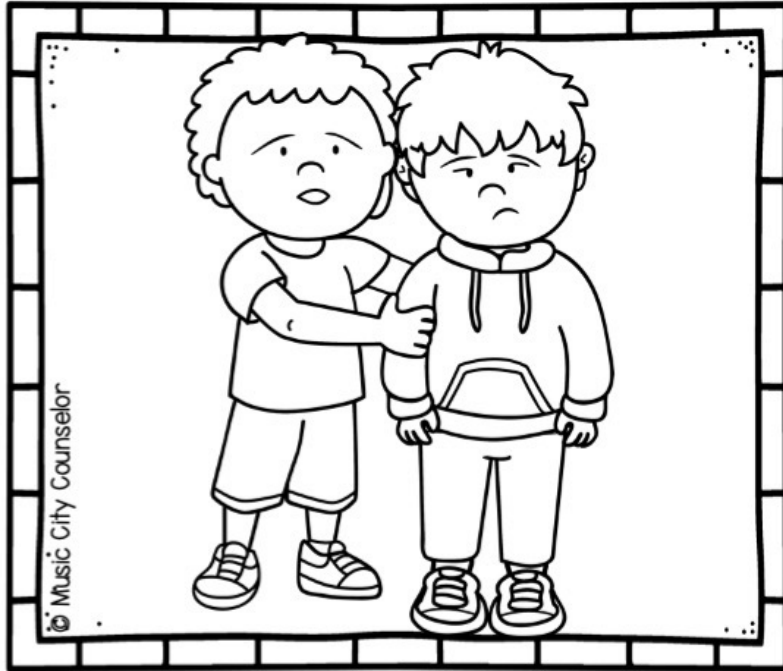
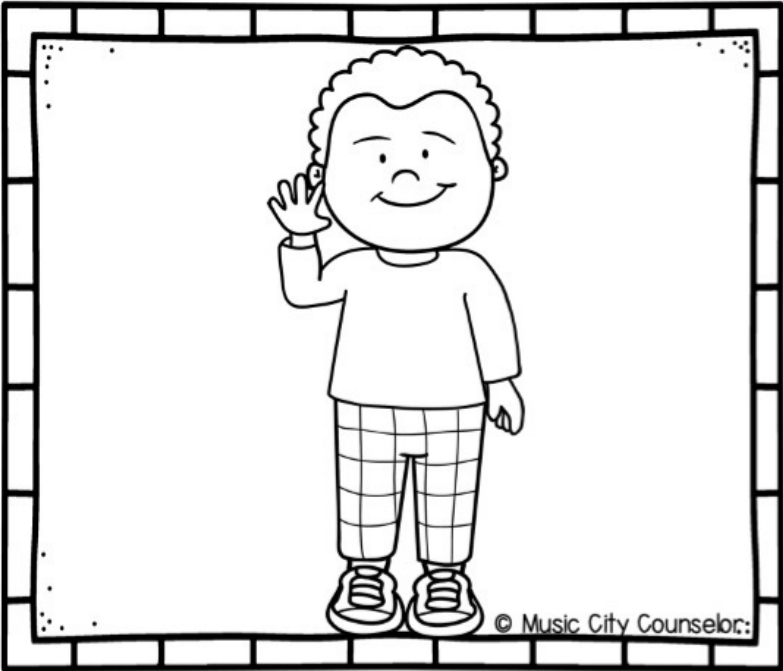


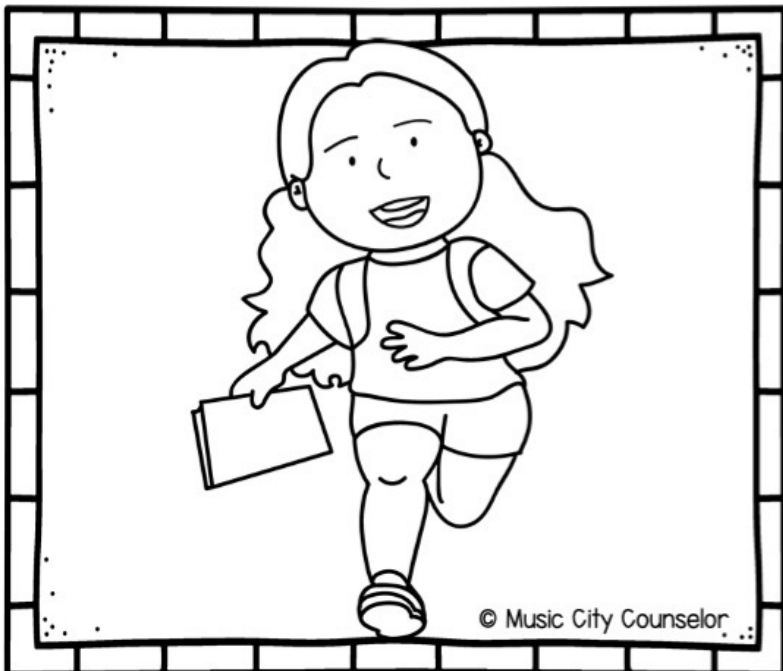
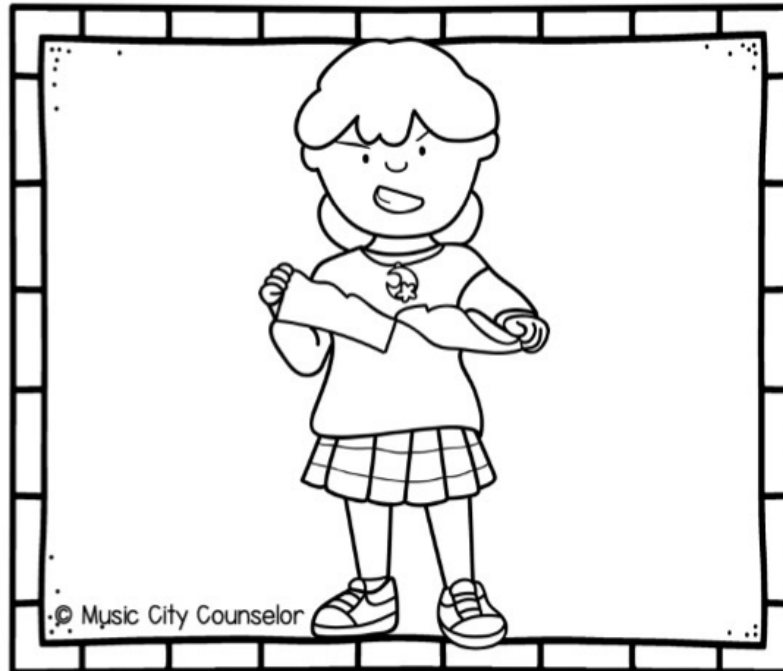
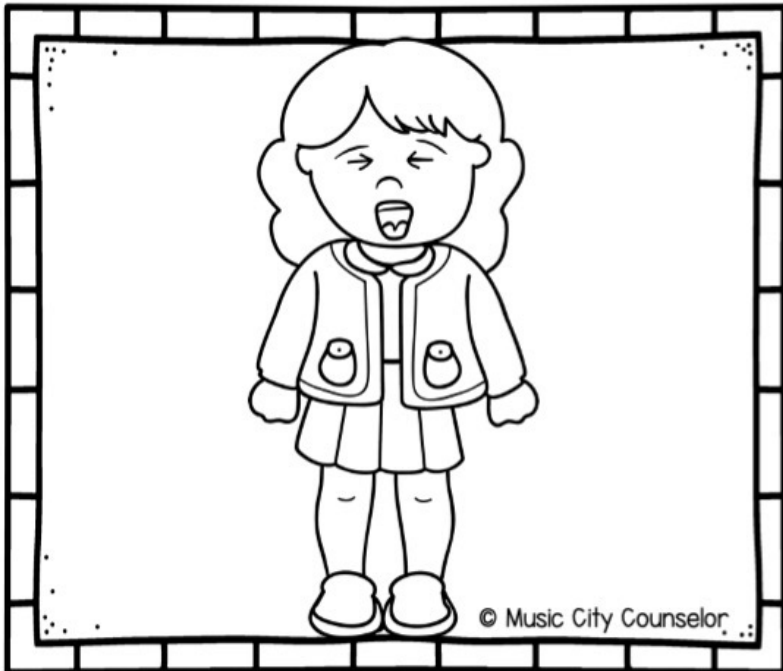
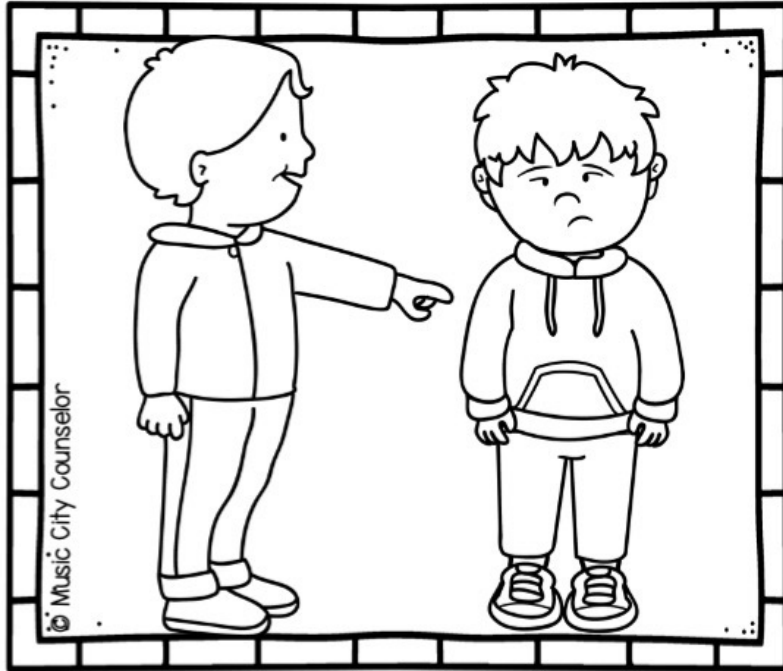
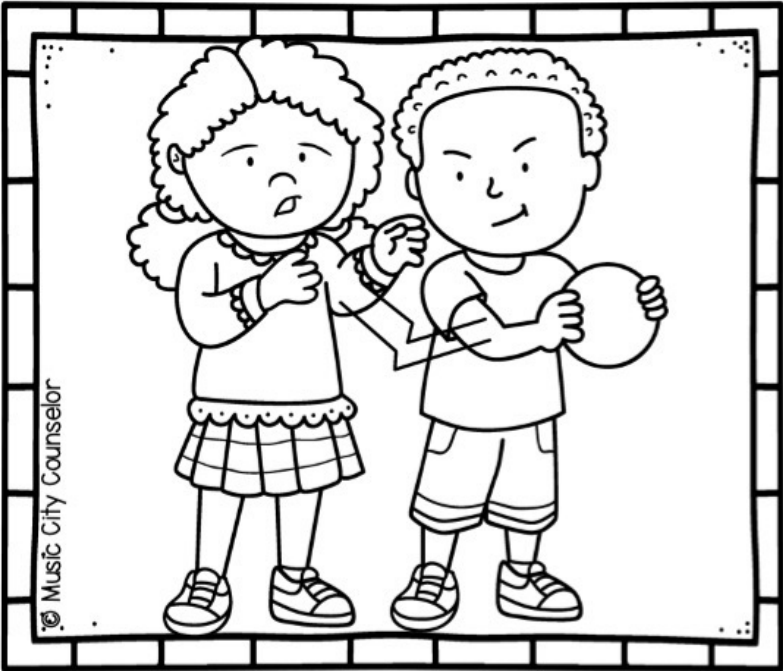
© Music City Counselor

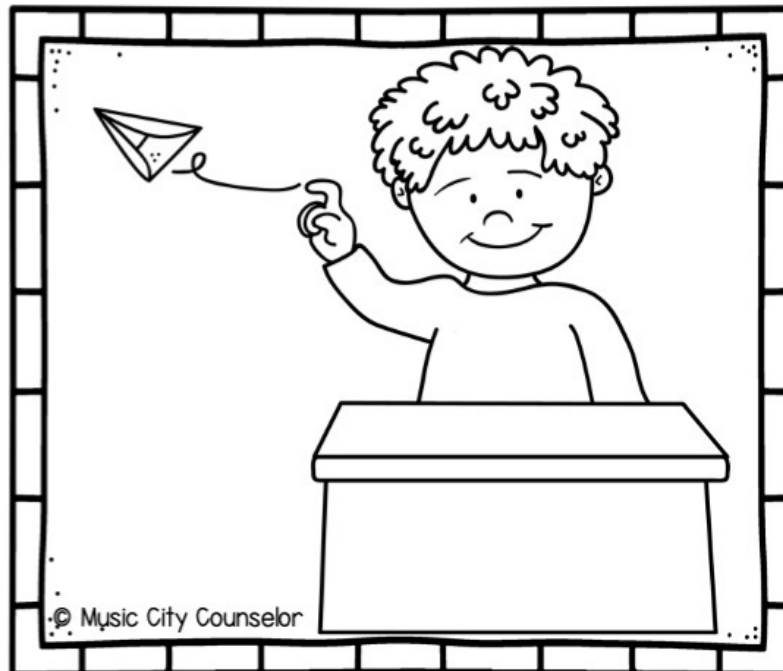
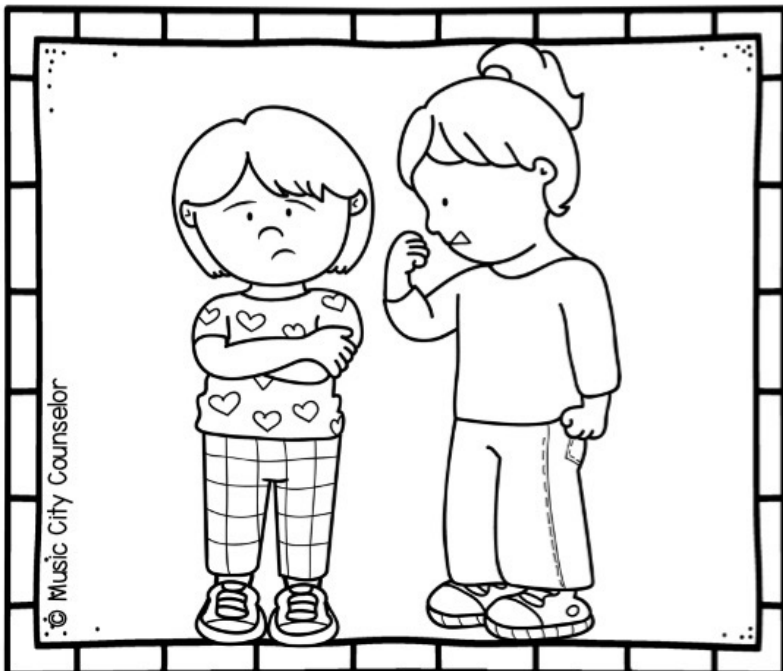
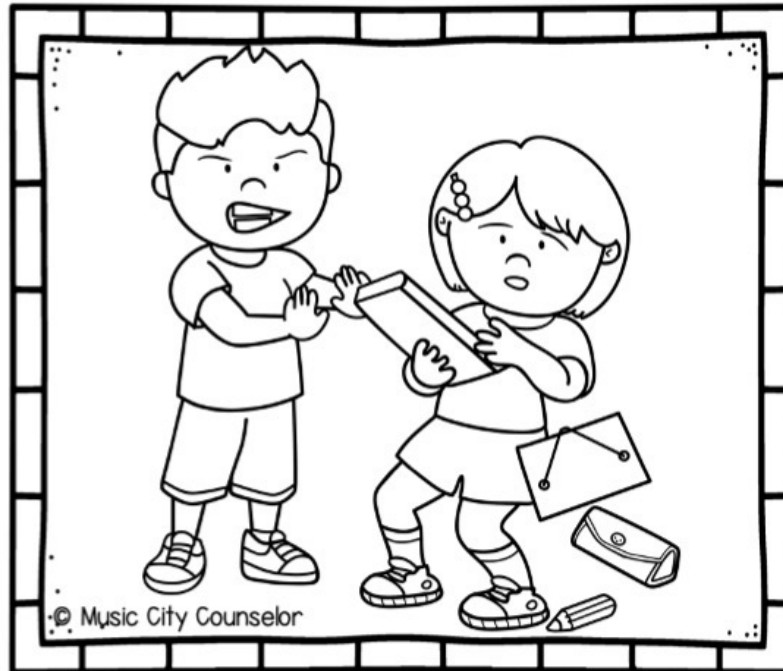
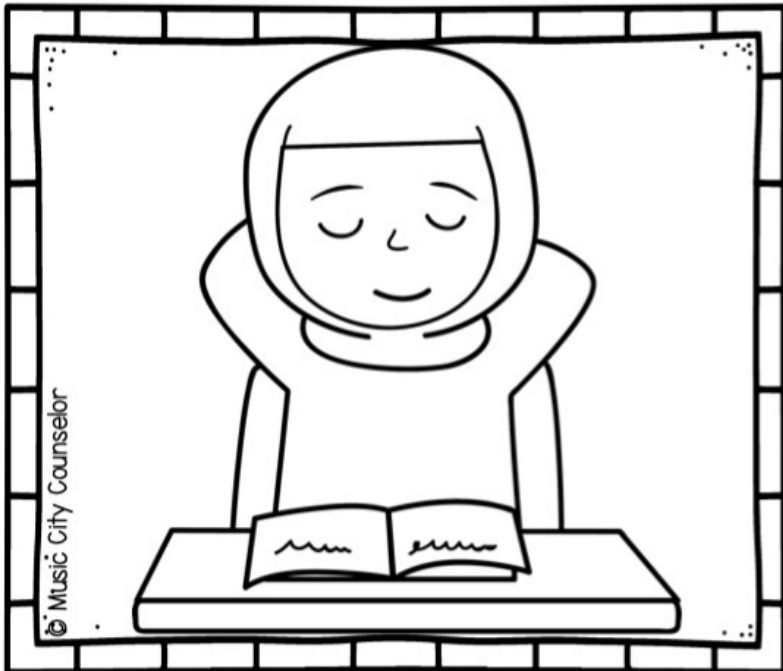
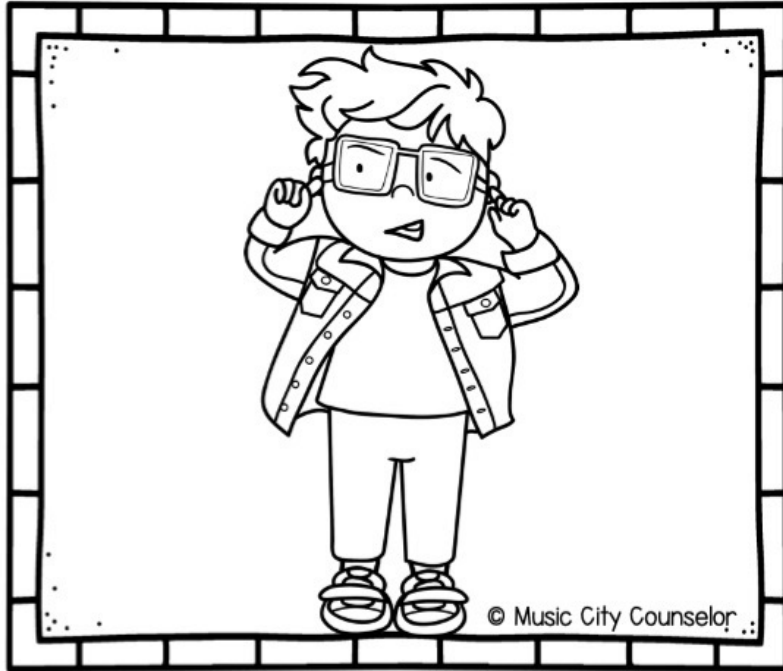
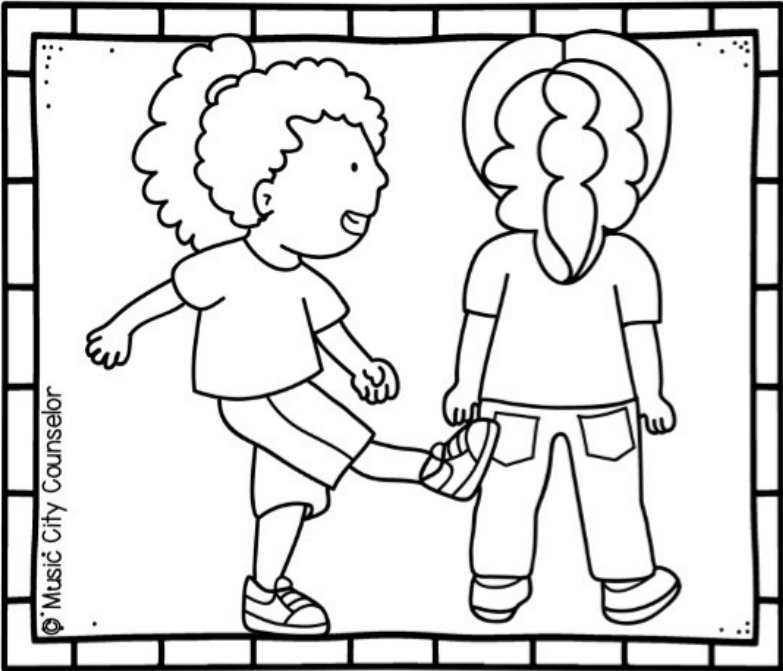


© Music City Counselor









© Music City Counselor



© Music City Counselor



© Music City Counselor



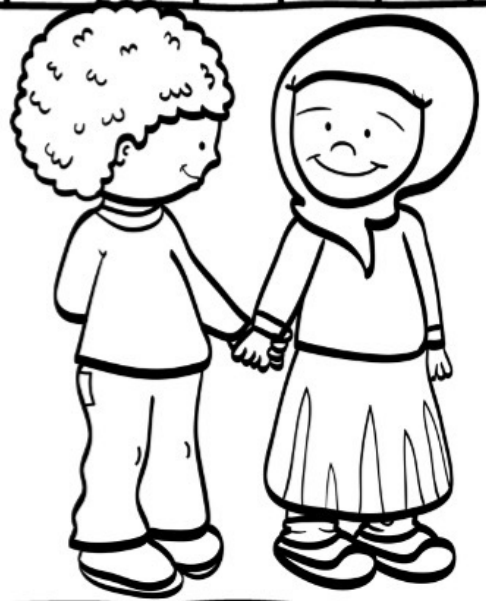
© Music City Counselor

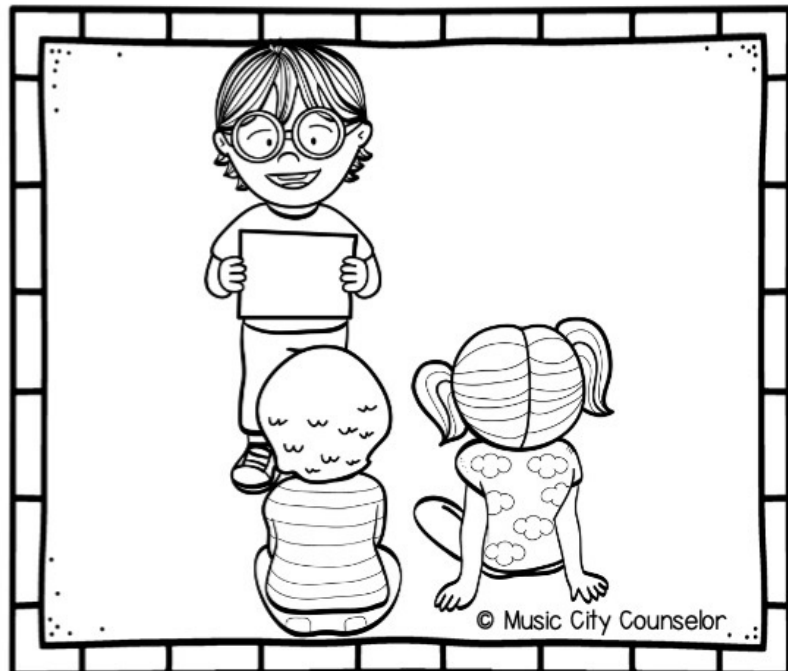
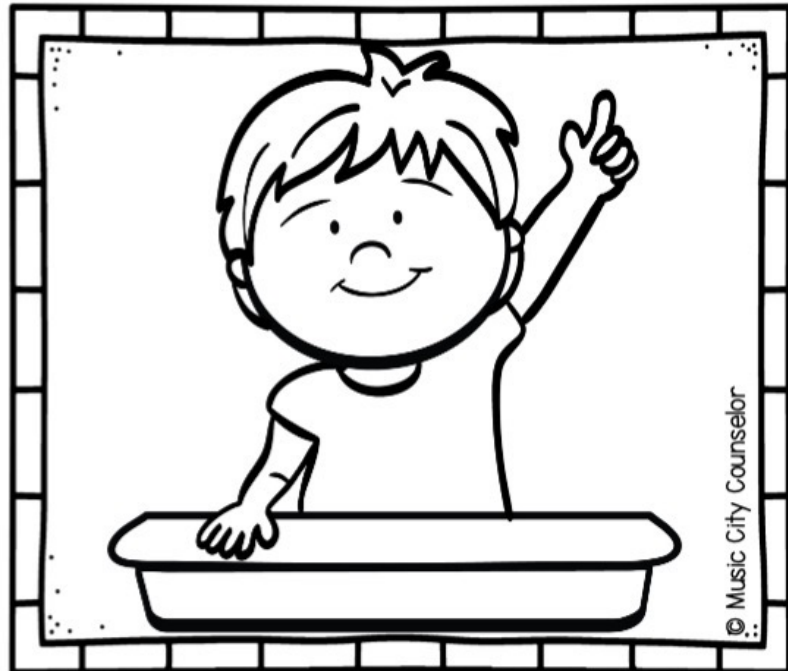
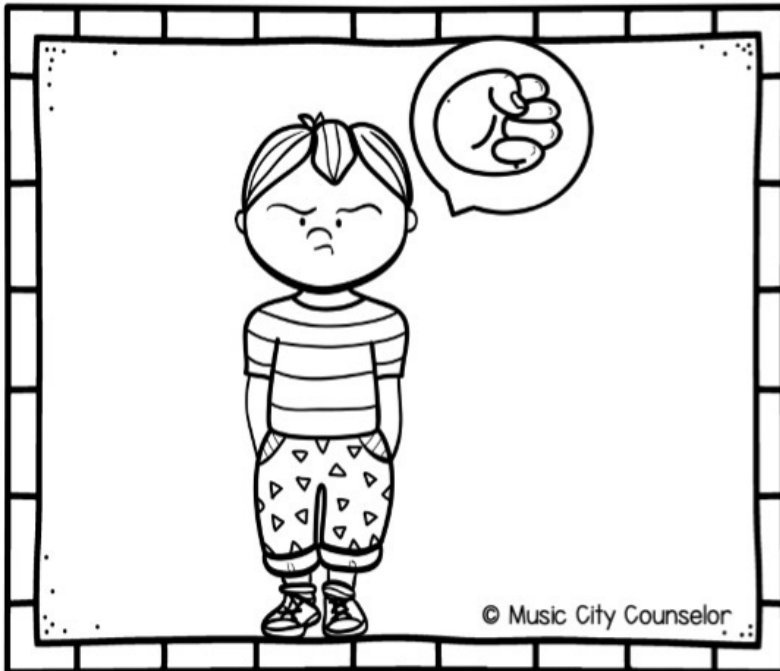


© Music City Counselor



© Music City Counselor

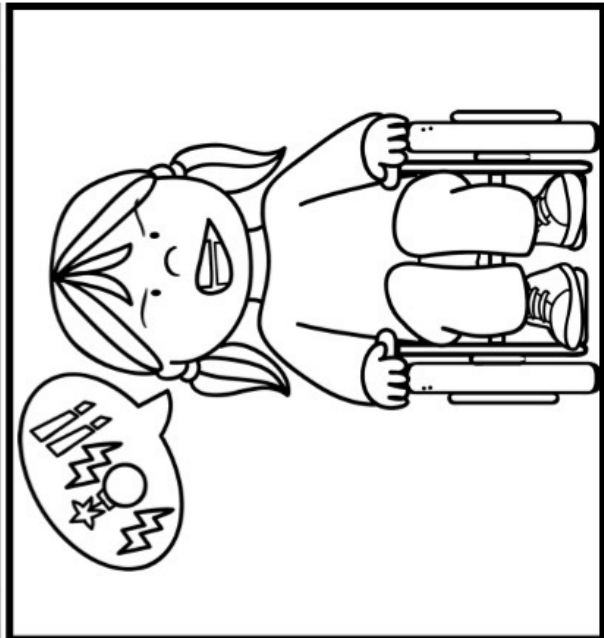
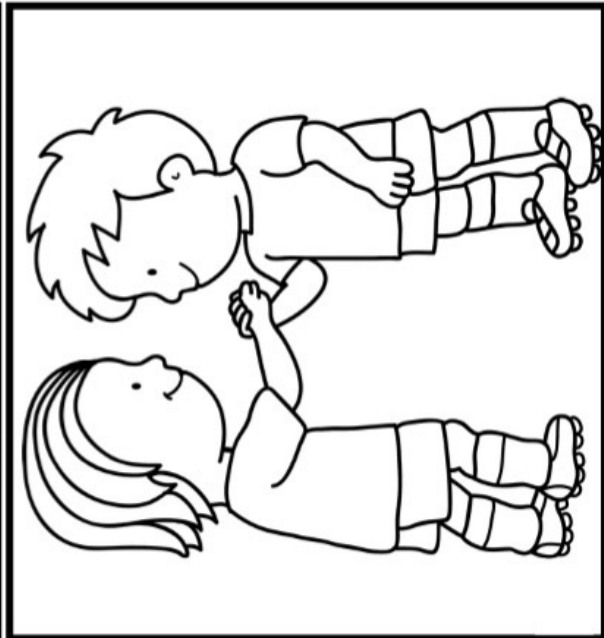
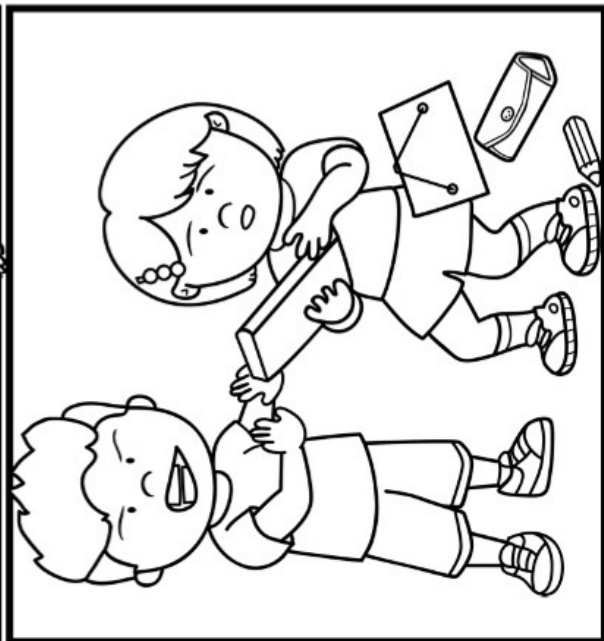
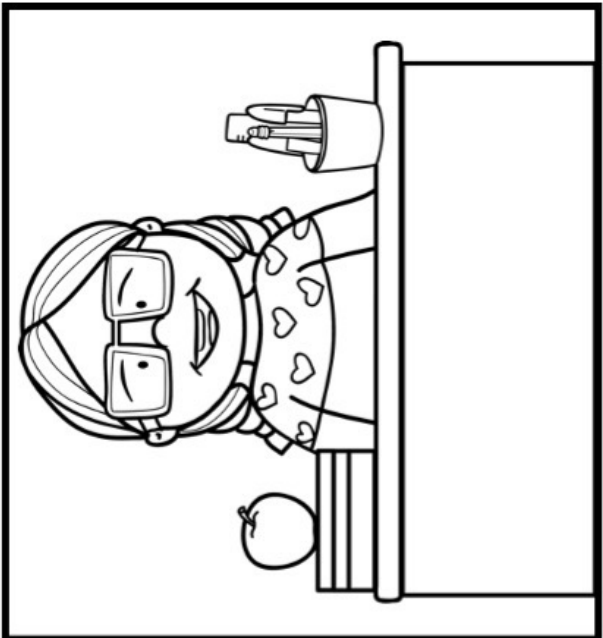
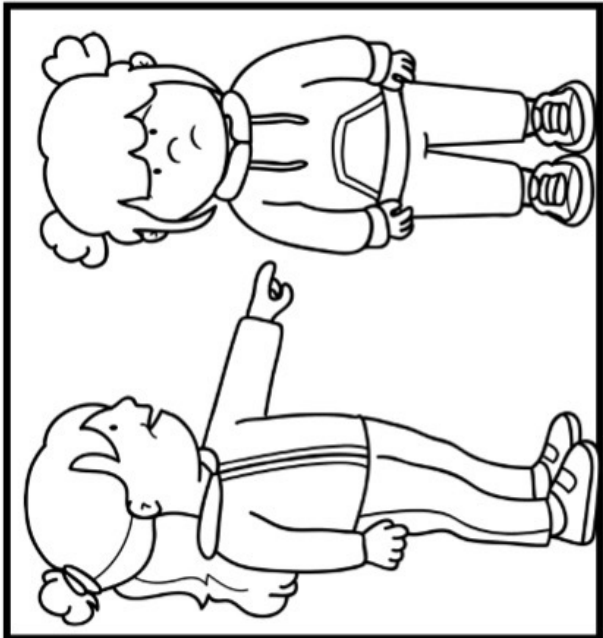




Worksheets & Coloring Pages

Name: _____

Color the pictures that show GREEN LIGHT CHOICES.



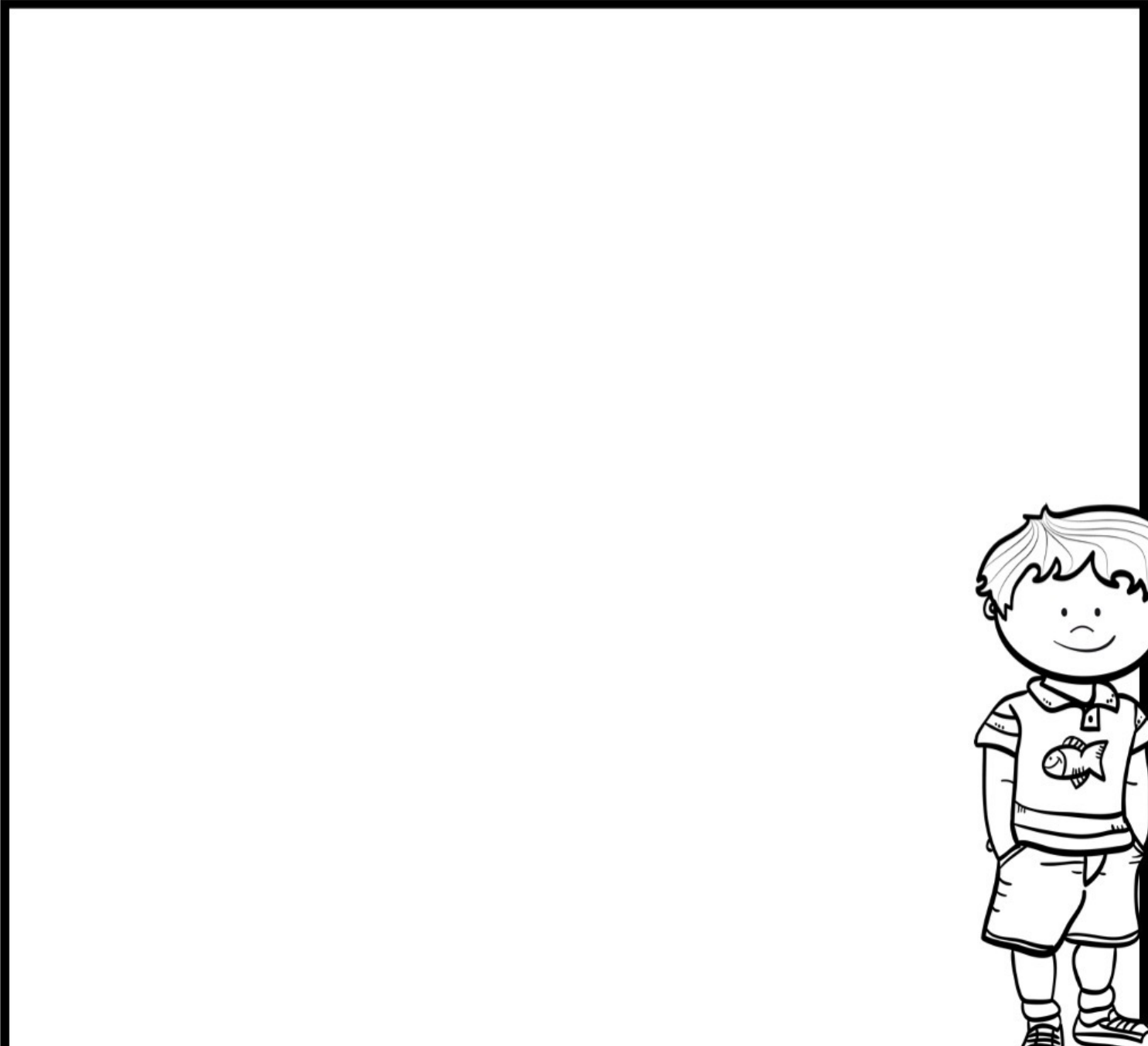
Name: _____

Write and draw about a time when you made a
GREEN LIGHT CHOICE.



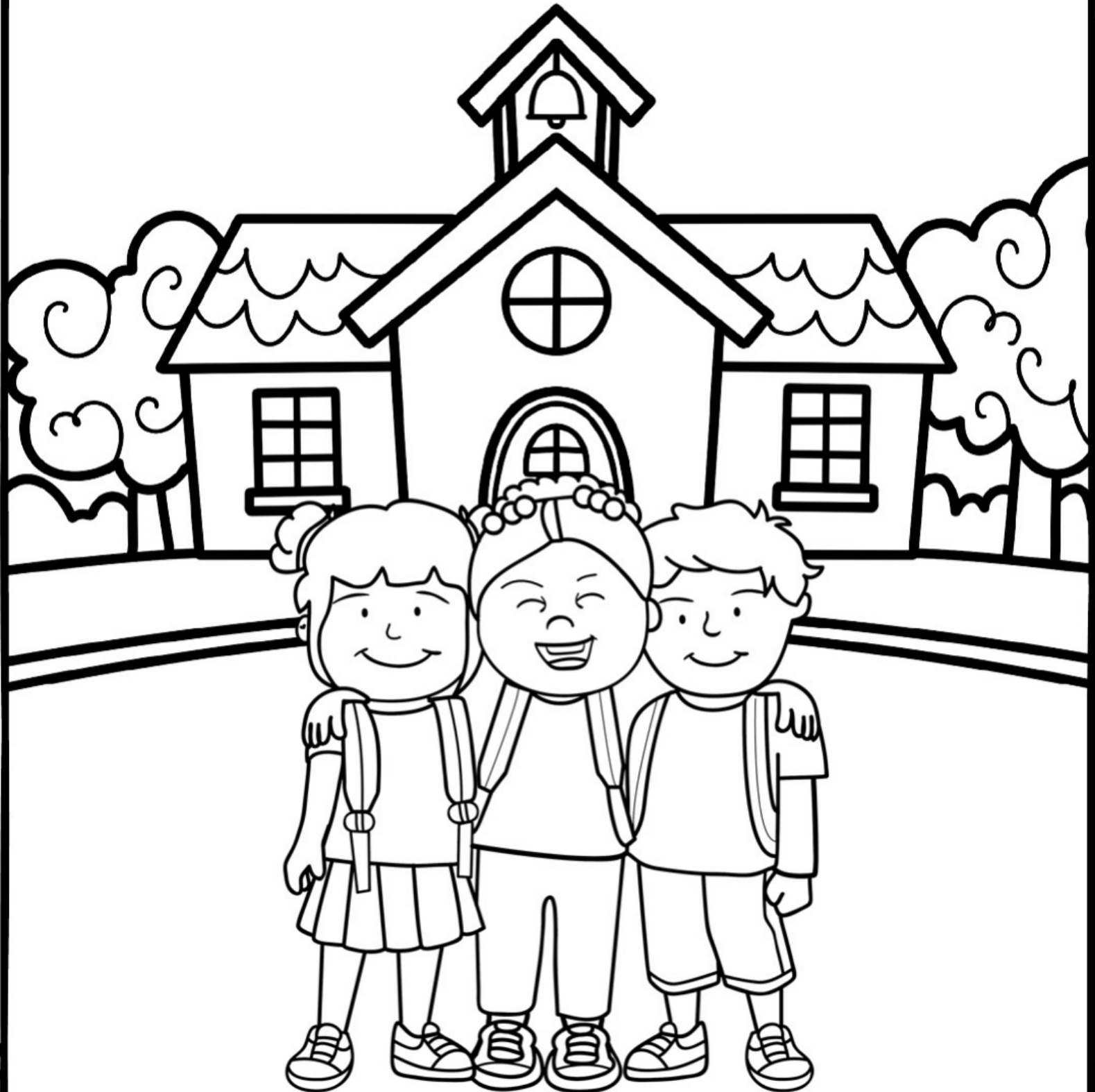
Name: _____

Write and draw about a time when you made a
GREEN LIGHT CHOICE.



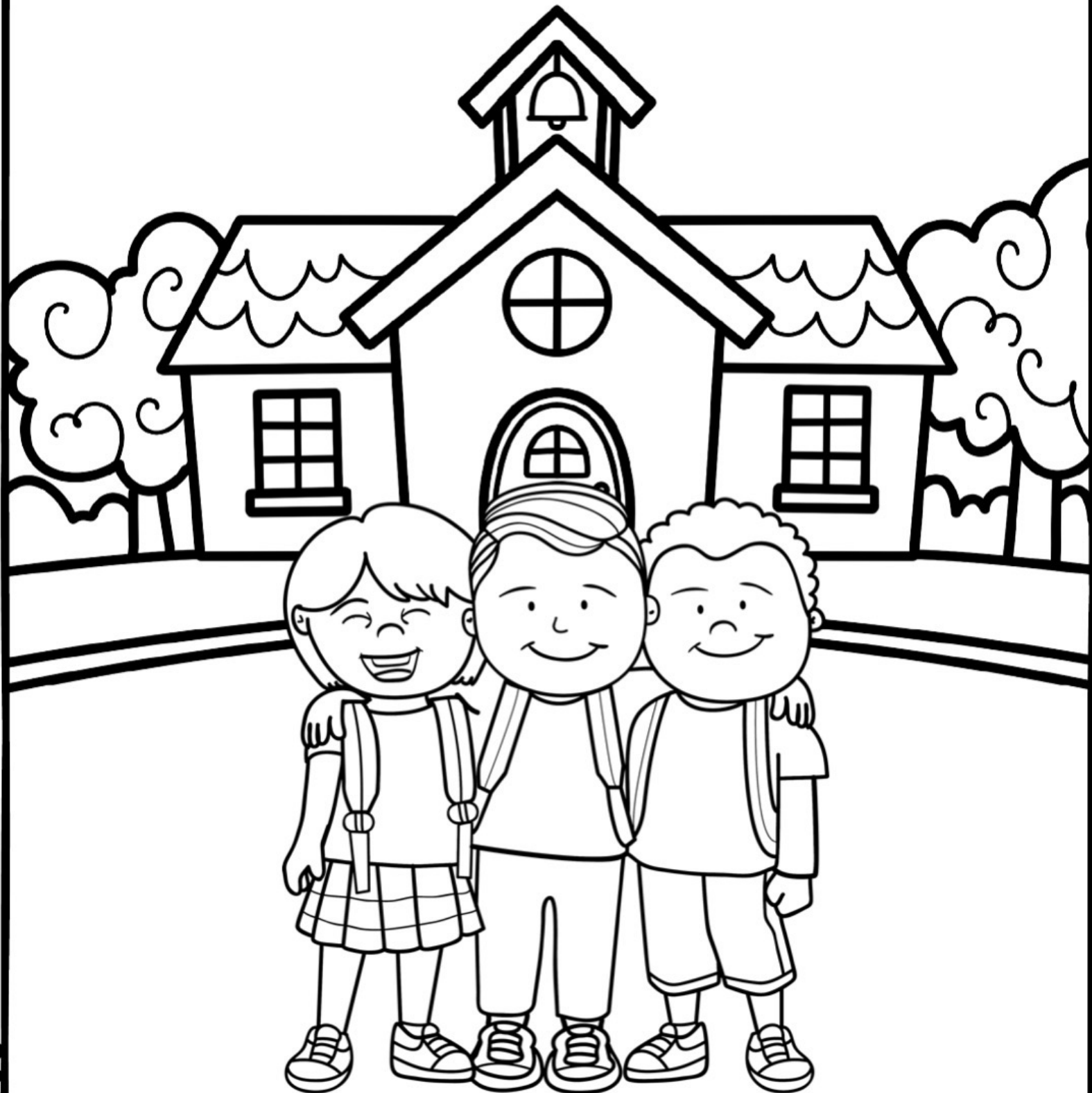
Name: _____

I can make
GREEN LIGHT CHOICES!



Name: _____

I can make
GREEN LIGHT CHOICES!



Certificate

CONGRATULATIONS,

You were caught making a

**GREEN LIGHT
CHOICE!**

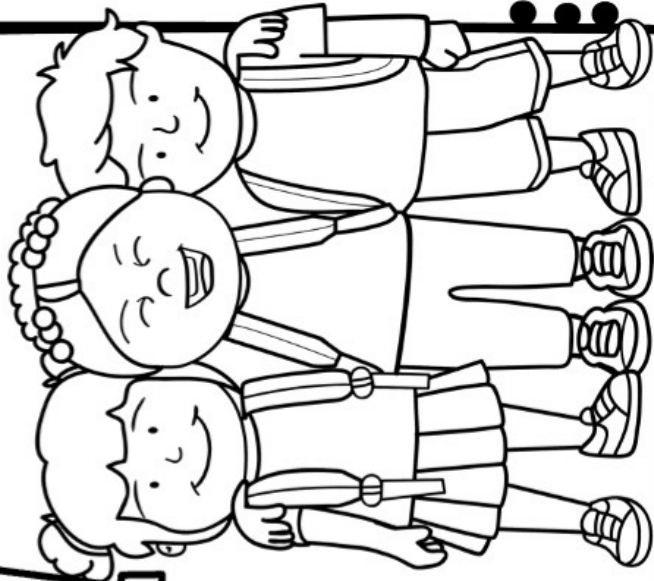
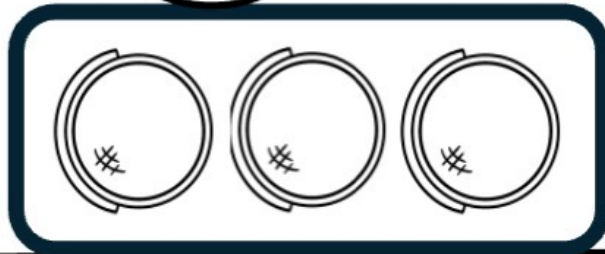


Signature

Date

CONGRATULATIONS,

You were caught making a
GREEN LIGHT
CHOICE!



Date

Signature

TERMS OF USE:

- Make copies for the purchaser's classroom AND share copies with other educators within your school building
- Reference (without distribution) this product in blog posts, seminars, professional development workshops, or other such venues provided there is both credit given to myself as the author and a link back to my TpT store included in the post/presentation

YOU MAY

- Claim the work as your own, alter the files in any way, or remove/attempt to remove the copyright
- Share this product with educators outside of your school building
- Repackage, sell, or giveaway this product to others
- Offer to share this product anywhere on the internet as a download or copy

YOU MAY NOT



Please contact me any time at laura@musiccitycounselor.com with questions, suggestions, resource requests, or comments. I'm here to help and would love to hear from you!

♥ *laura outhout*

THIS RESOURCE WAS MADE POSSIBLE THANKS TO:

