

THANK YOU FOR YOUR PURCHASE!



Did you know that when you leave feedback on TPT you earn credits towards future purchases?

★★★★★ Extremely satisfied

I truly appreciate your feedback to help my little store grow.

LET'S BE FRIENDS

Access my
Freebie
Library



Stay updated on new product announcements (they are 50% off for the first 24 hrs posted!) by following me on TPT, checking out my website, and subscribing to my newsletter.



If you have any questions or concerns please email me at:

heartandmindteaching@gmail.com

♥
Ashley



STRONG

PEOPLE

don't put others

DOWN

they lift them

UP.

-Michael P. Watson

You're **BRAVER**
than you believe
You're **STRONGER**
than you seem
You're **SMARTER**
than you think.

-A.A. Milne



Be
SOMEBOY
who makes
EVERYBOY
feel like a
SOMEBOY

-Kid President



They may forget
what you **SAID**
but they will never
forget how you
made them
FEEL.

-Maya Angelou

UNLESS


someone
like you

CARES

a whole awful lot
nothing is going
to get better

IT'S NOT.

-Dr. Seuss



I can't promise to **FIX**
all your
PROBLEMS
But I can promise you
won't have to
face them **ALONE.**



YOU ARE

SAFE

IN

THIS

SPACE.

It's nice to be
IMPORTANT

but it's more
important to be

NICE.

WELCOME

You belong here.

You are the
reason

I am here.



REMEMBER:



It's okay to have a bad day.



Not everyone has to like you.



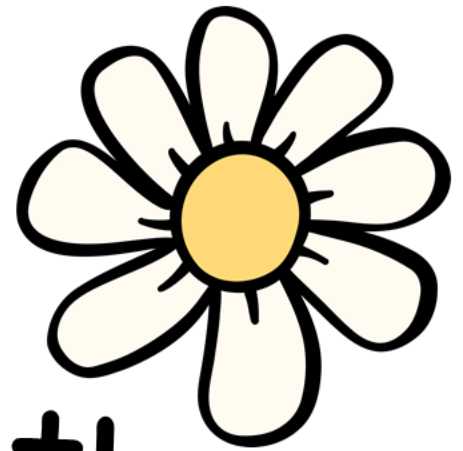
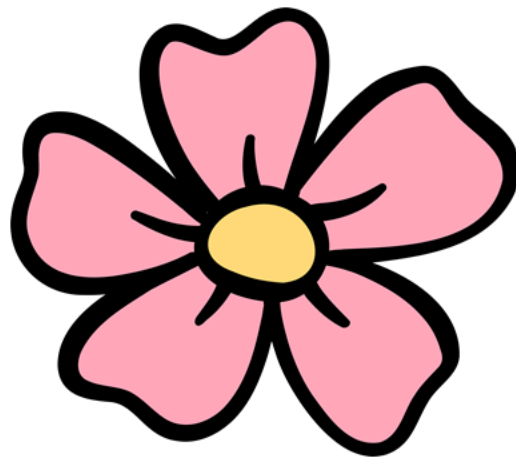
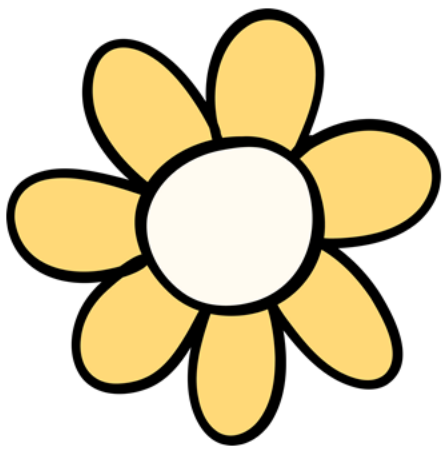
Mistakes don't define you.



It takes strength to
ask for help.



You are amazing just
the way you are.



Welcome to the

SCHOOL

SOCIAL WORKER

Office







SCHOOL

SOCIAL WORKER

OFFICE





I MESSAGES

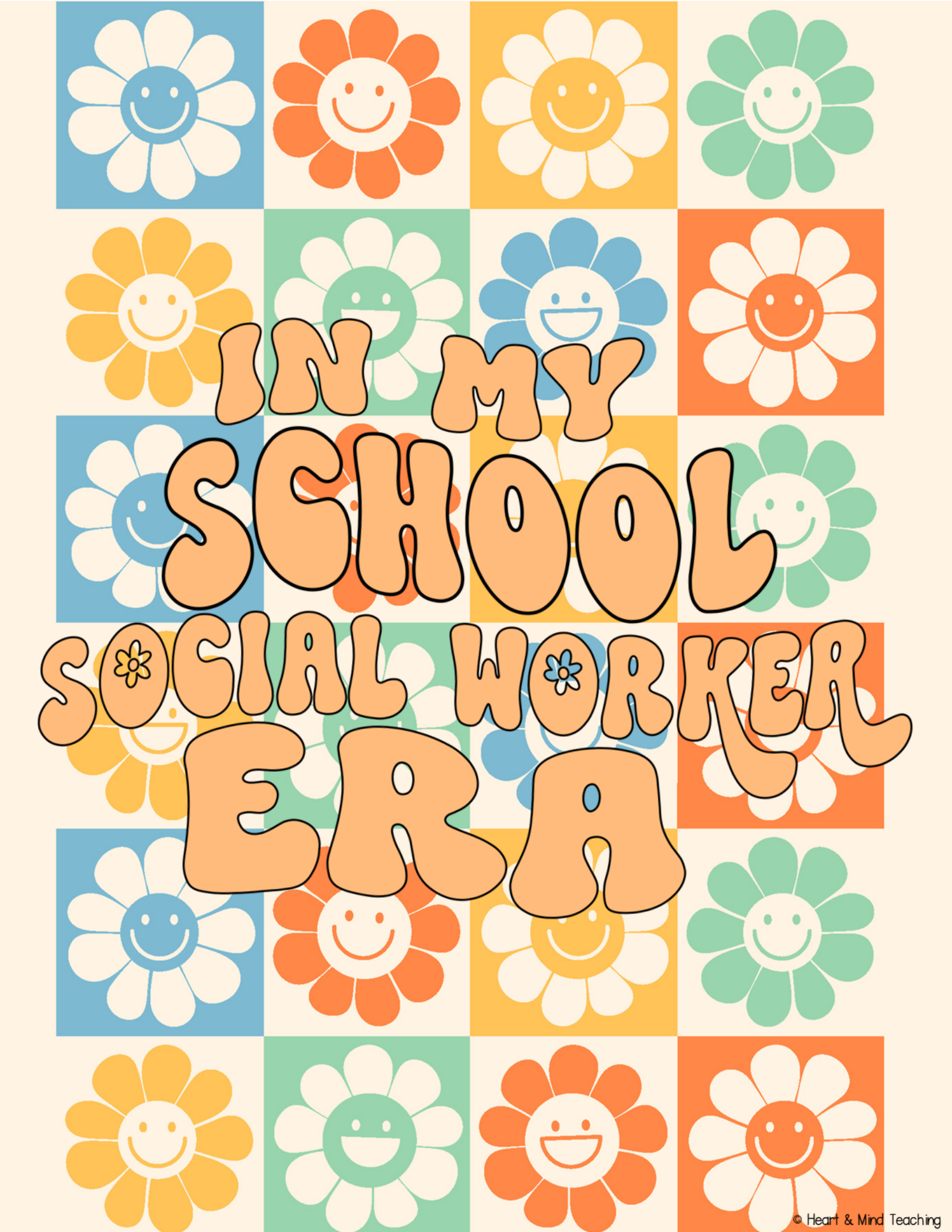
I feel _____

when you _____

because _____

can you please _____





IN MY
SCHOOL
SOCIAL WORKER
ERA

It takes big
HEARTS
to shape little
MINDS.



WHAT YOU
SAY IN HERE
STAYS IN HERE
UNLESS:

Someone is hurting you.

You want to hurt someone.

You want to hurt yourself.

WHERE IS THE SOCIAL WORKER?

Come on in!

With a student.

In a meeting.

In a classroom.

Out of the building.



I can not **CONTROL**
other People.

But I can **CONTROL**
My Words.
My Thoughts.
My Actions.

Before you say it,

THINK

T Is it true?

H Is it helpful?

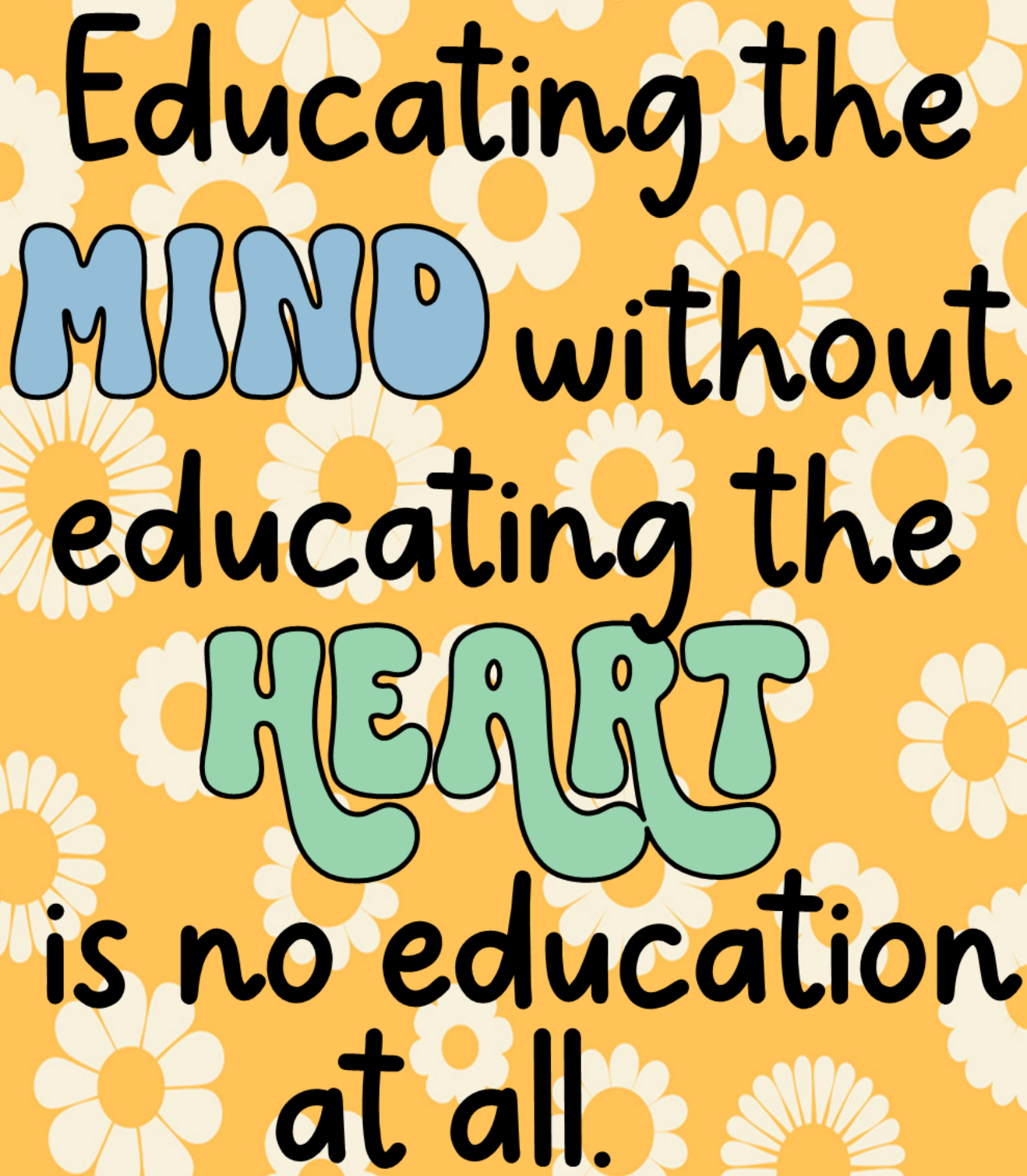
I Is it inspiring?

N Is it necessary?

K Is it kind?



EMPATHY
IS A
SUPERPOWER.



Educating the
MIND without
educating the
HEART
is no education
at all.



YOU
CAN DO

HARD

THINGS.






Children are
great imitators, so
give them something

GREAT

to imitate.

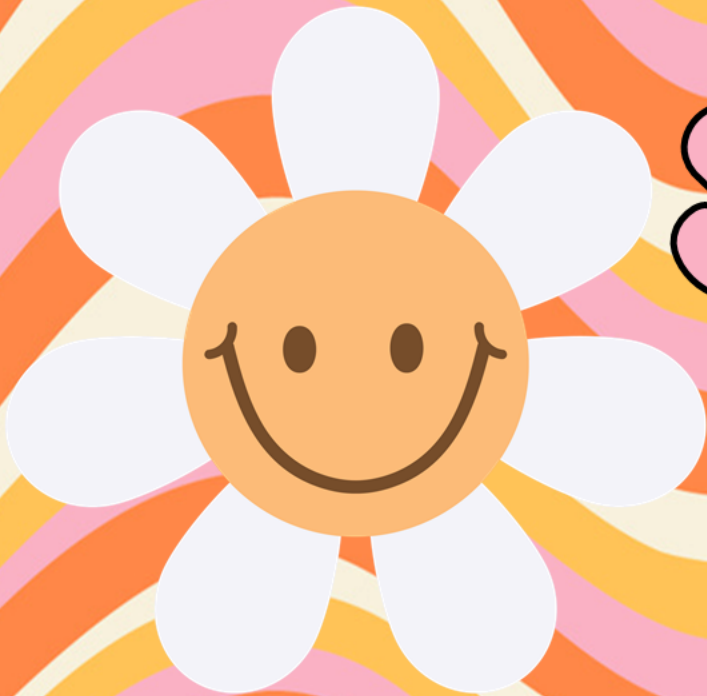


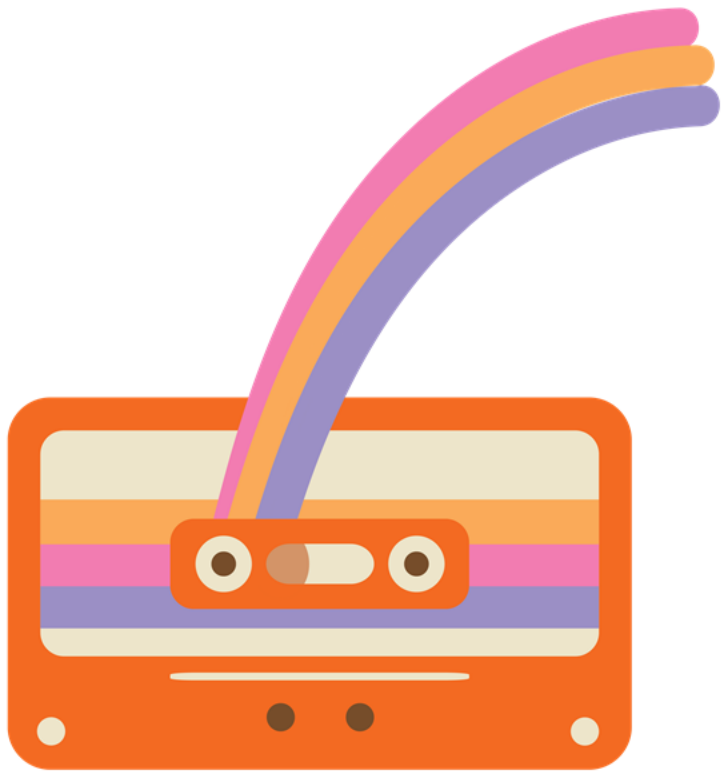
You can do
ANYTHING
But you can't do
EVERYTHING.

You have
survived
100%
of your
worst days.



You can
SURVIVE
this one.





Your
words

MATTER.

Choose
Wisely.



I'm a School

SOCIAL WORKER

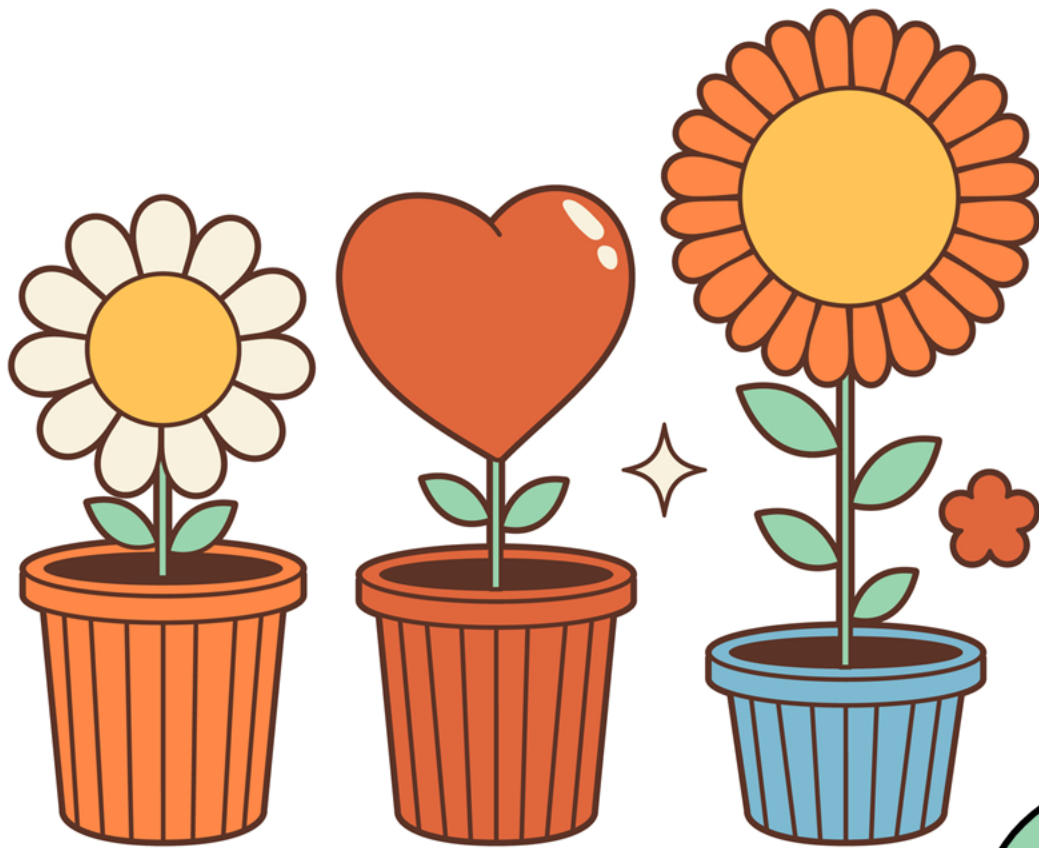
If you think my
hands are full
you should see my

HEART.



The kids who need
the most
LOVE
will ask for it in the
most unloving ways.





WORRYING

does not take away
tomorrow's troubles,
it takes away today's

PEACE.



When little people are
overwhelmed by

**BIG
EMOTIONS**

It's our job to share
our calm, not to
join their chaos.

-L.R. Knost

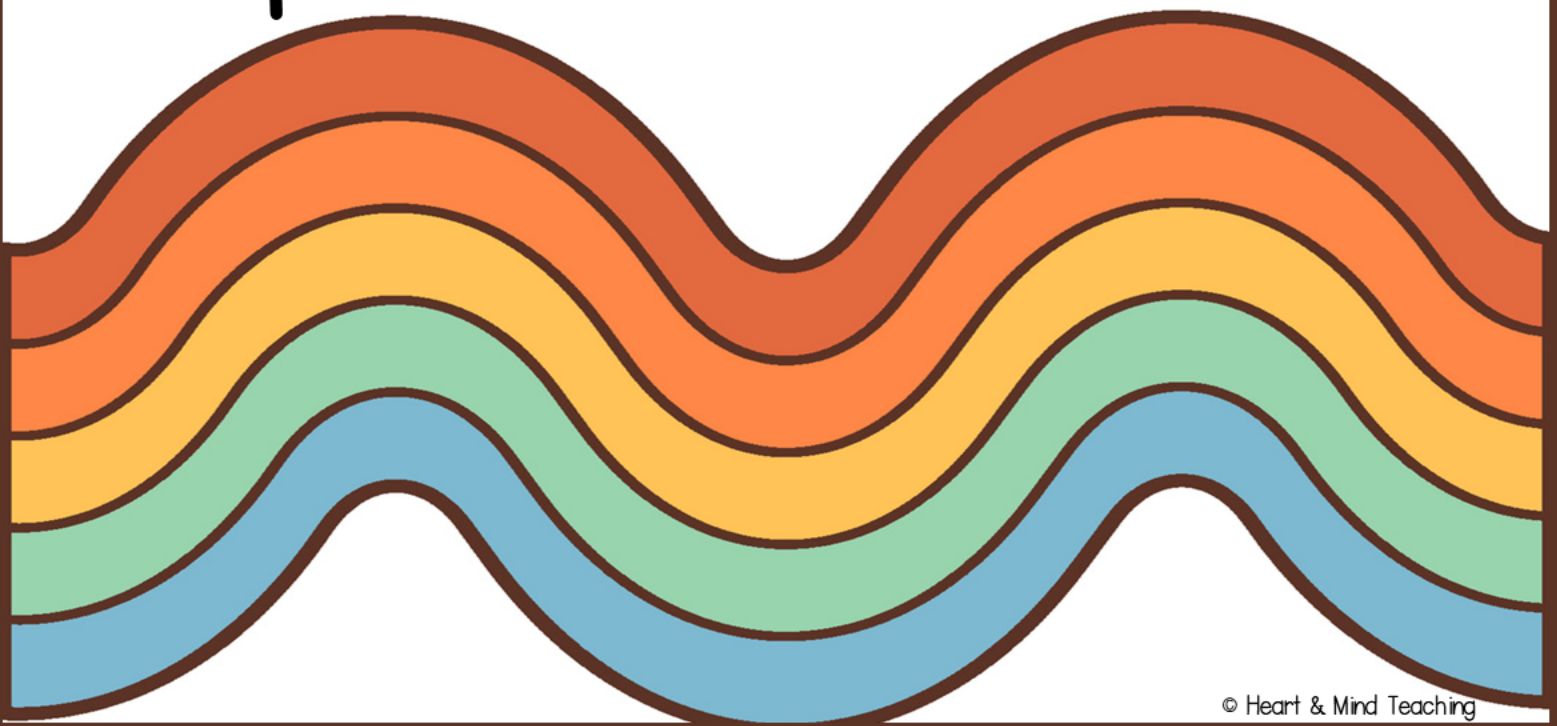
I am your

SCHOOL

SOCIAL WORKER

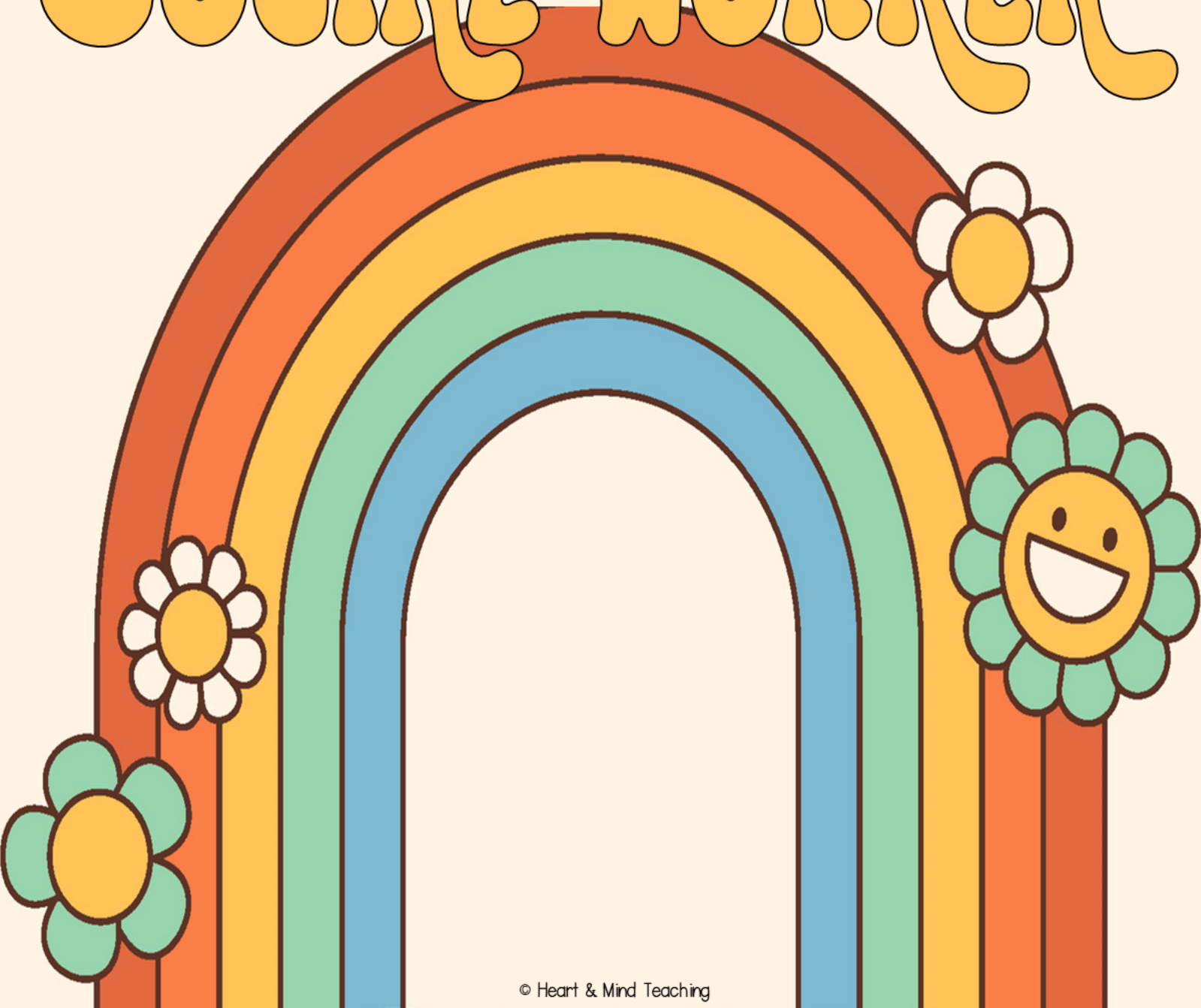
I can't solve all your
problems,

but I can listen with an
open mind and heart.



Every kid deserves a

SCHOOL
SOCIAL WORKER



**GOOD
VIBES
ONLY**





FREE

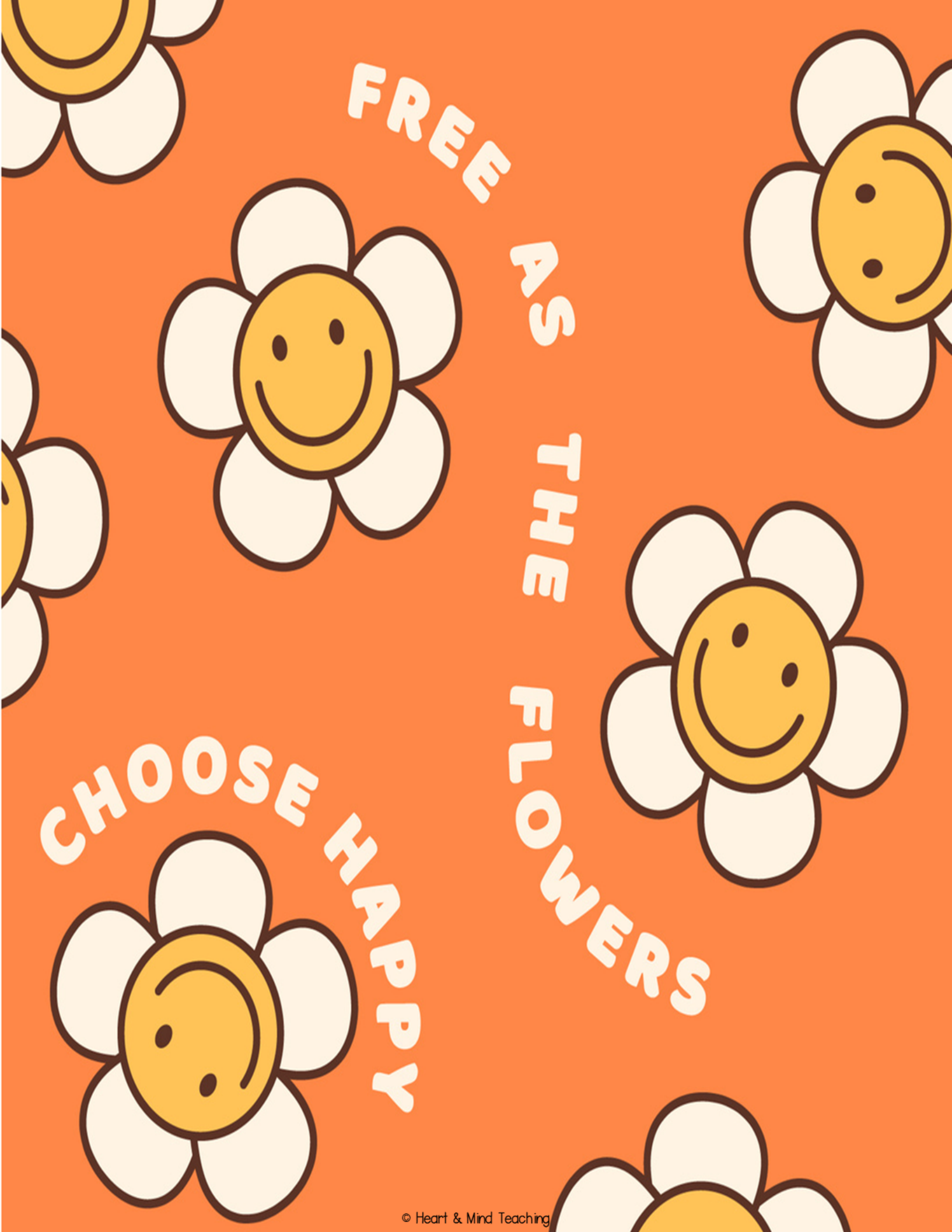
AS

THE

FLOWERS

CHOOSE

HAPPY

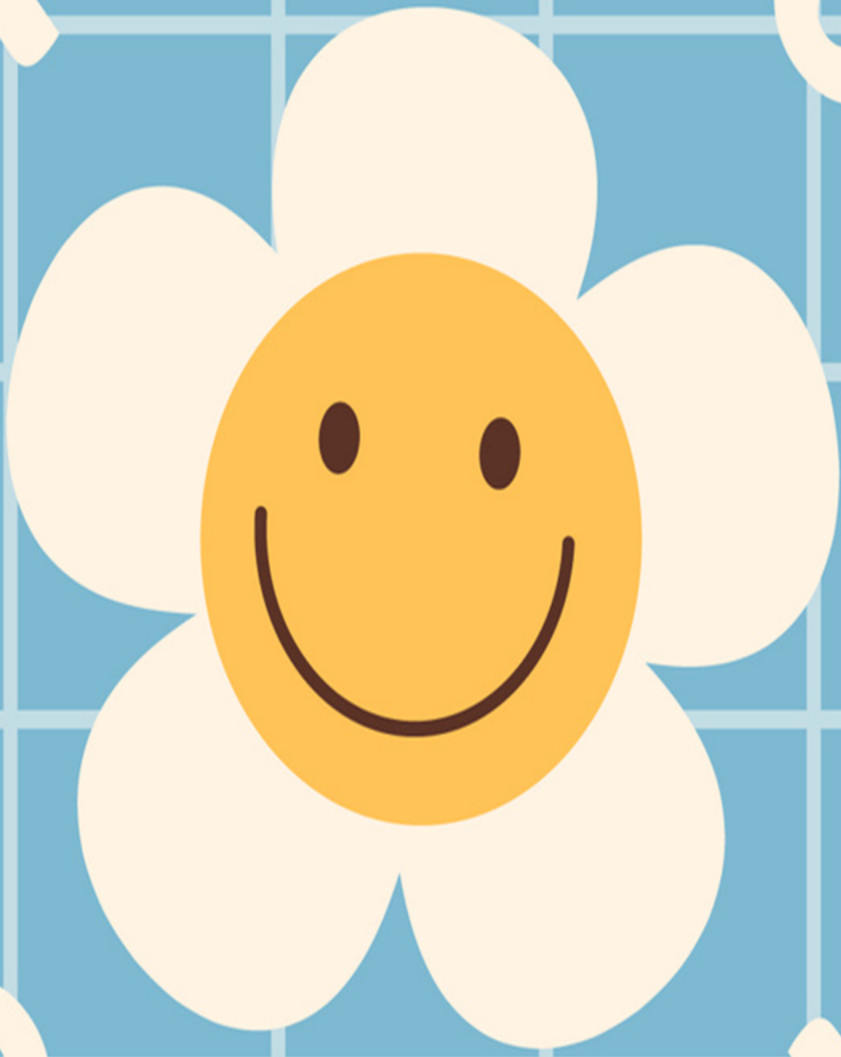


LOVE



RULES

SEE HAPPY CHOOSE HAPPY
CHOOSE HAPPY



B E

K I N D

T O

R A W

K I N D



BLOOM

WHERE YOU

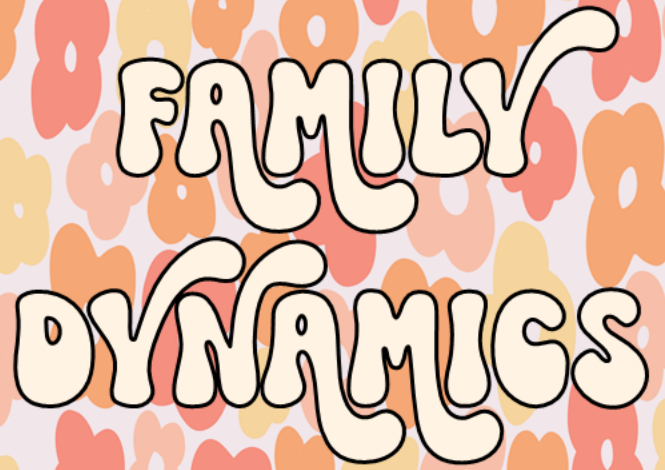
ARE PLANTED

SPREAD
KINDS
NESS



SOCIAL
SKILLS

A rectangular card with a background of repeating stylized floral patterns in shades of orange, red, and yellow. The text "SOCIAL SKILLS" is written in a large, bubbly, white font with a black outline. The letter 'O' in "SOCIAL" contains a small black flower icon.



FAMILY
DYNAMICS

A rectangular card with a background of repeating stylized floral patterns in shades of orange, red, and yellow. The text "FAMILY DYNAMICS" is written in a large, bubbly, white font with a black outline.



SELF
ESTEEM

A rectangular card with a background of repeating stylized floral patterns in shades of orange, red, and yellow. The text "SELF ESTEEM" is written in a large, bubbly, white font with a black outline.



CHARACTER
EDUCATION

A rectangular card with a background of repeating stylized floral patterns in shades of orange, red, and yellow. The text "CHARACTER EDUCATION" is written in a large, bubbly, white font with a black outline. The letter 'O' in "EDUCATION" contains a small black flower icon.



STRESS /
ANXIETY

A rectangular card with a background of repeating stylized floral patterns in shades of orange, red, and yellow. The text "STRESS / ANXIETY" is written in a large, bubbly, white font with a black outline.



BULLYING

A rectangular card with a background of repeating stylized floral patterns in shades of orange, red, and yellow. The text "BULLYING" is written in a large, bubbly, white font with a black outline.

GROWTH
MINDSET

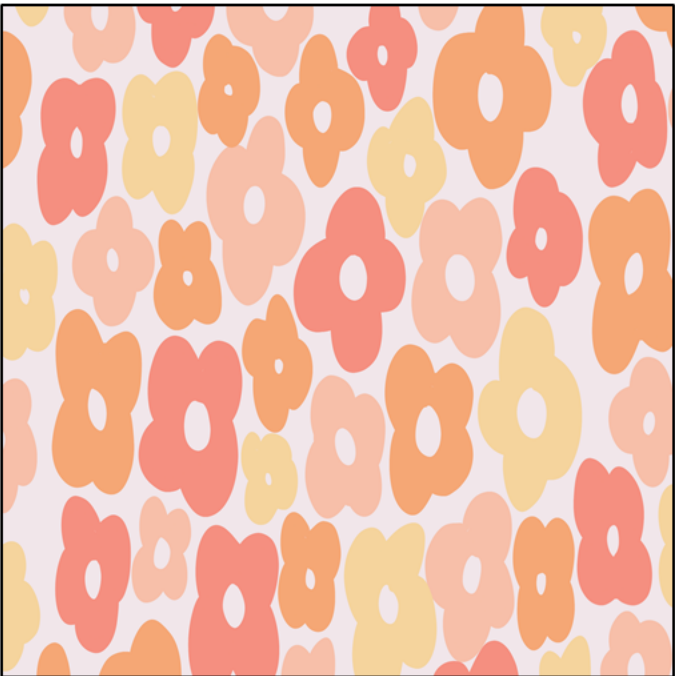
GRIEF

BEHAVIOR

ANGER

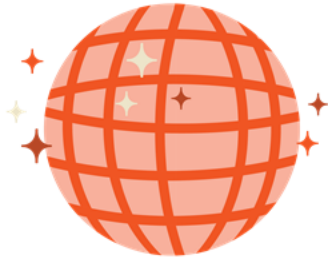
MINDFULNESS

SUCCESS
SKILLS



Make your own

Pass to see the
SOCIAL WORKER



Student Name: _____

Teacher: _____

Date: _____ Time: _____

Signed: _____



Pass to see the
SOCIAL WORKER



Student Name: _____

Teacher: _____

Date: _____ Time: _____

Signed: _____



Pass to see the
SOCIAL WORKER



Student Name: _____

Teacher: _____

Date: _____ Time: _____

Signed: _____



Pass to see the
SOCIAL WORKER



Student Name: _____

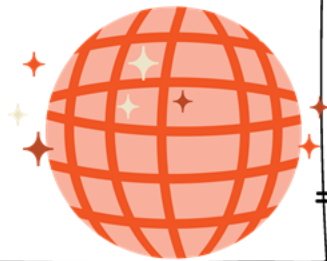
Teacher: _____

Date: _____ Time: _____

Signed: _____



Note from the
SOCIAL WORKER



Note from the
SOCIAL WORKER



Note from the
SOCIAL WORKER

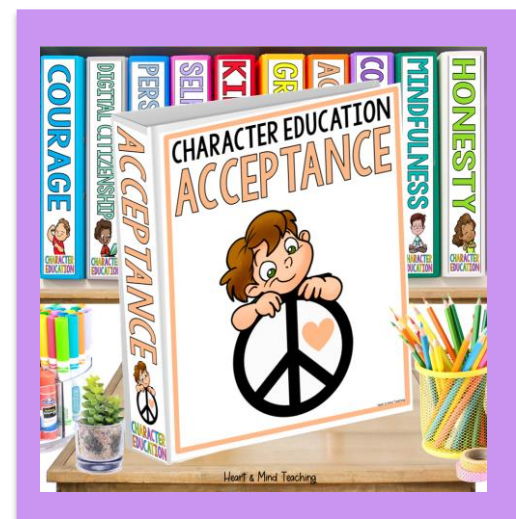
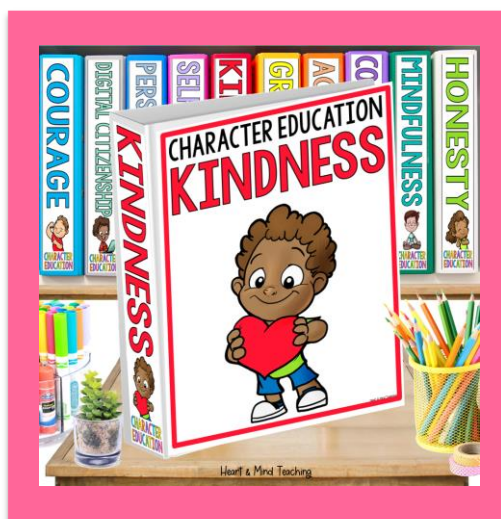
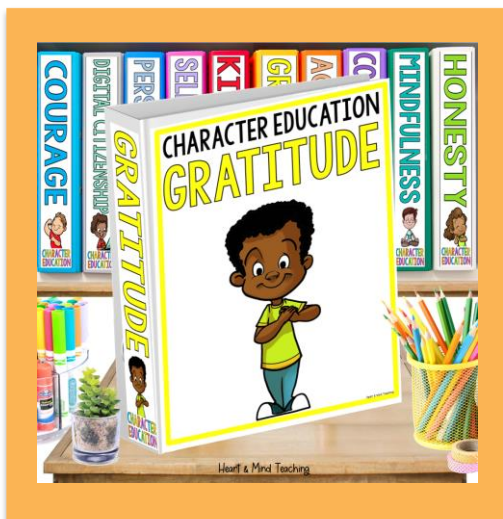
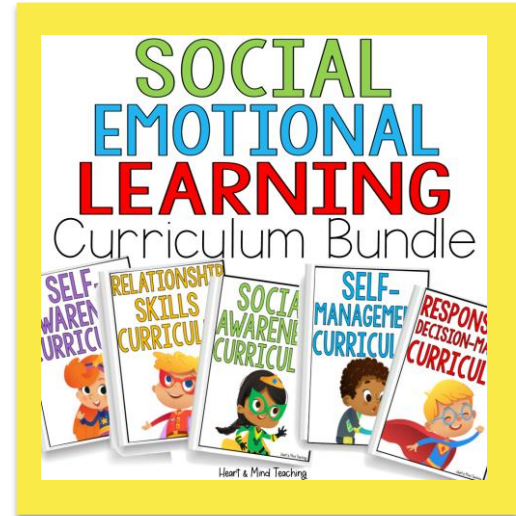
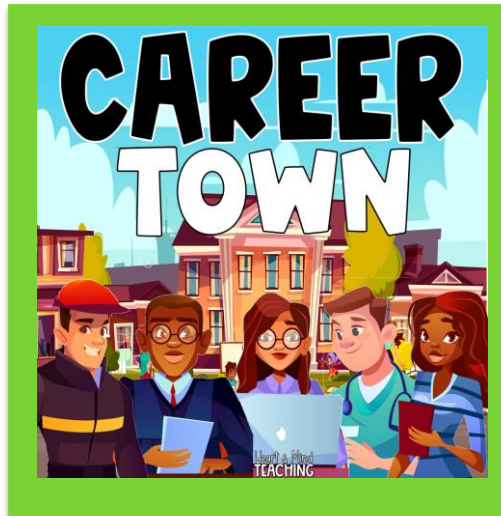


Note from the
SOCIAL WORKER



CHECK THESE OUT

CLICK ON THE PICTURES TO GET A CLOSER LOOK.



Would you like to spend less time browsing for resources and lesson planning, and more time serving students? Let Laura from [Music City Counselor](#) and Ashley from [Heart and Mind Teaching](#) do the work for you!

CLICK TO COLLAB

MEMBER Perks

- ♥ Data-driven resources by theme.
- ♥ \$35+ value of ready-to-use materials.
- ♥ Lessons, group curriculums, forms, & activities.
- ♥ Tier 1, 2, and 3 research-based resources.
- ♥ No contracts, cancel anytime.

HEART + MIND
TEACHING



THANK YOU

FOR SUPPORTING MY LITTLE SHOP.

Hi there! I'm Ashley- a School Counselor, curriculum developer, blogger, and mama to two young boys. I have a passion for creating fun and engaging resources for Counseling and Social Emotional Learning.

LET'S BE FRIENDS

Ashley

Access my
Freebie
Library



FOLLOW FOR EXCLUSIVE SAVINGS

New products are 50% off for 24hrs.

CLICK HERE

★ HOW CAN YOU EARN TPT CREDITS? When you leave feedback, TpT rewards you with credits that you can use toward future purchases.

ACCESS MY FREEBIE LIBRARY

Join my Newsletter to be informed of all future added freebies.

I WANT FREEBIES

TERMS OF USE

© Heart and Mind Teaching, 2024. All rights reserved. Purchase of this item entitles the purchaser the right to reproduce for classroom, personal, and google classroom use only. Use in multiple classrooms, requires the purchase of additional licenses. Redistribution or duplication of this product is strictly forbidden without the written permission of the publisher. Copying any part of this product and placing it on a publicly accessible website is strictly forbidden and is a violation of the Digital Millennium Copyright Act (DMCA). You may post this for single-classroom use on a password protected student site such as google classroom. **You may NOT post my products on any public, for-profit, or commercial websites or entities, such as Outschool.** Please do not sell or distribute any part of this as your own. Thank you for abiding by universally accepted codes of professional ethics while using this product.



If you have any questions or concerns please email me at:

heartandmindteaching@gmail.com

CREDITS

